

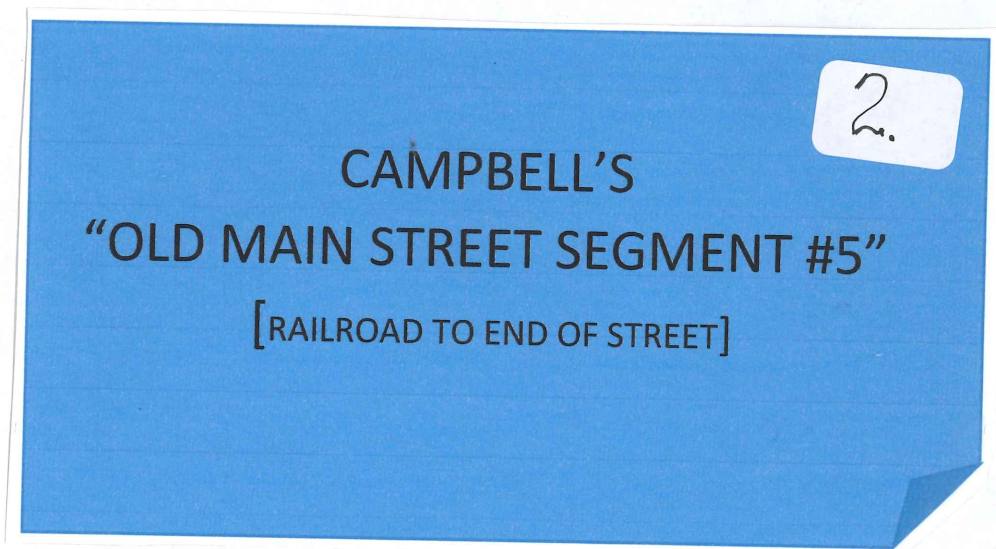
1. OLD MAIN STREET SLIDE TOUR --  
SEGMENT #5.

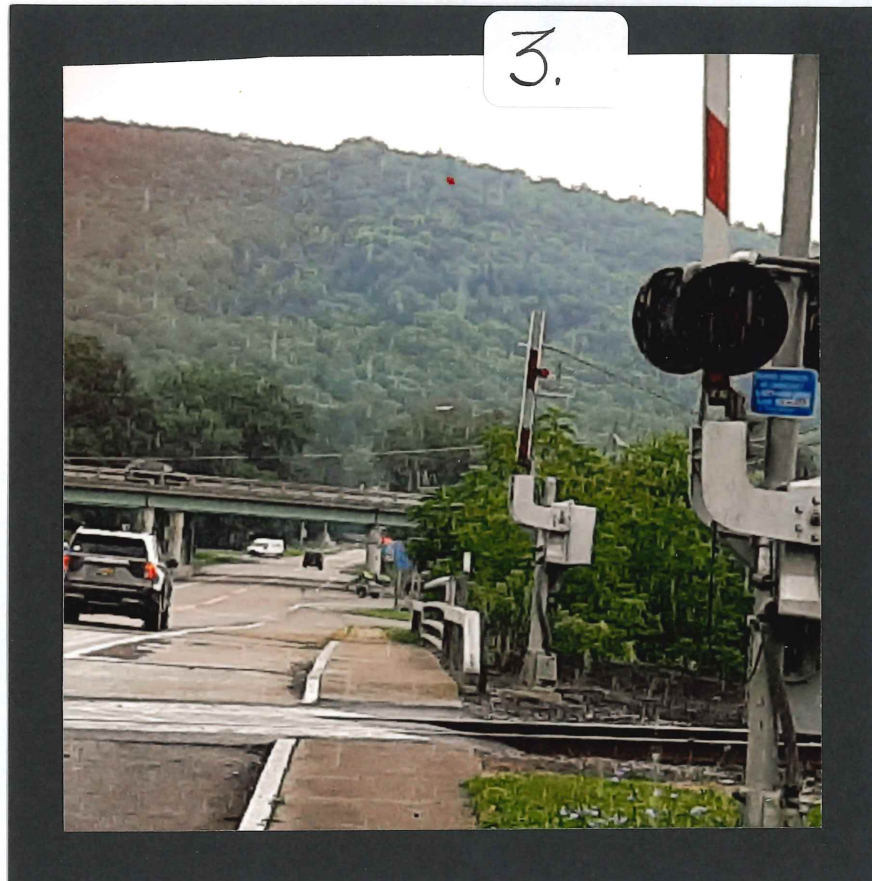
1

"CAMPBELL'S OLD MAIN STREET  
SLIDE PRESENTATION

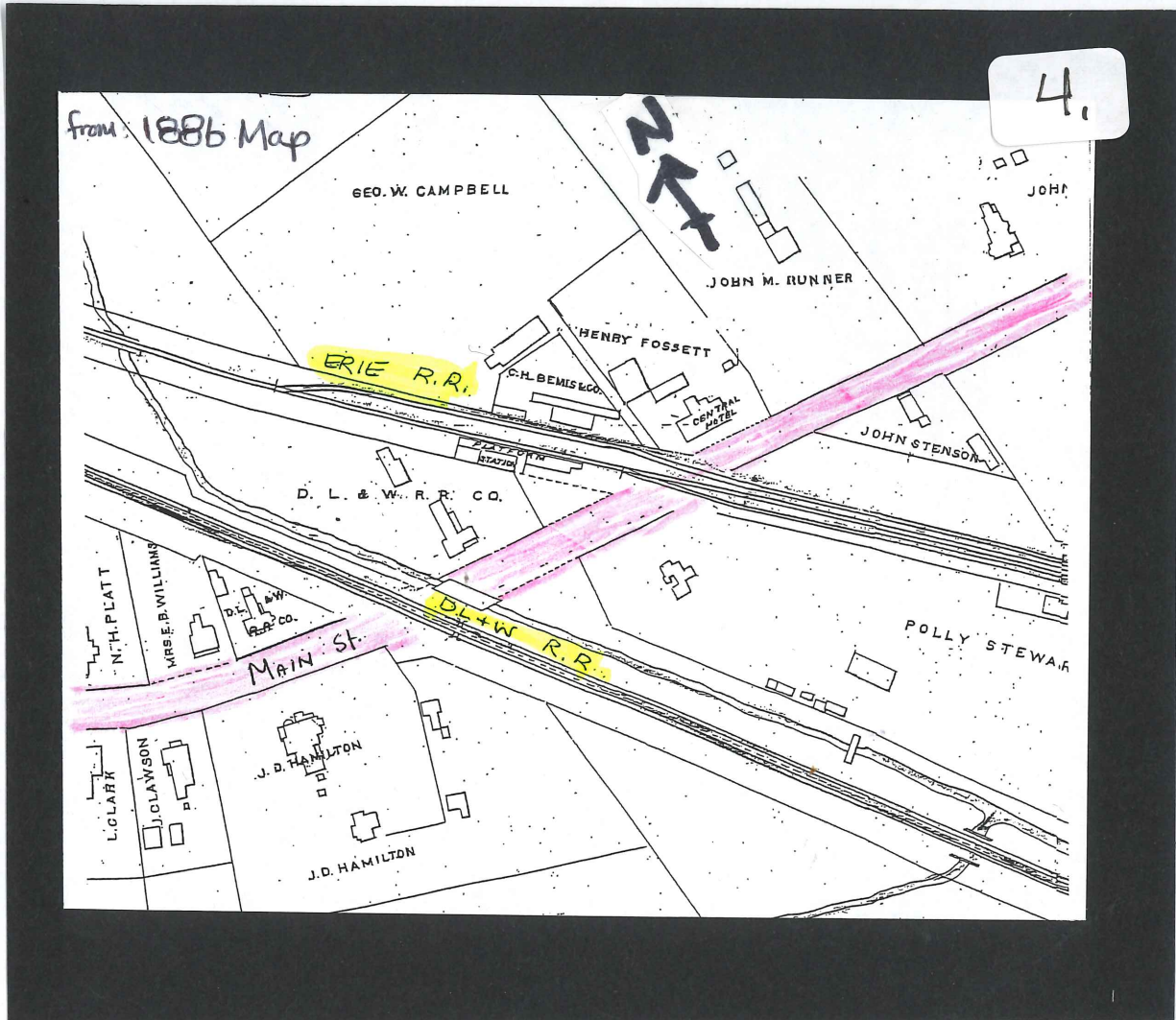
Compiled by:  
Sandy Austin, Town Historian

## 2. THE RAILROAD TO THE END OF MAIN STREET.





3. RR CROSSING TODAY. This is the original site of the D L & W Tracks.



4. 1886 MAP-- Note that there were 2 sets of railroad tracks; the 1<sup>st</sup> one we are crossing was the D L & W chartered in 1880 as the New York Lackawanna Western Railroad with the depot at the end of Bemis Street; this track was the one with the hump in the road.

5.



*Erie Station  
Campbell NY  
about 1909*

5. PIC Erie Depot—Next we are crossing the Erie which is not there anymore. It was the first railroad to come to Campbell and here's a photo of Erie Depot from about 1909.

I note here that in the 1880's, the railroad contributed to the Hamlet of Campbell prospering; I believe that the railroad conductor, announcing the name of "Campbell" contributed to the name Cam-bull being Americanized to Camp - bell'. The Town was named after the "Campbell" family from Scotland where the name was pronounced "Cam'- bull".

6. [INFO]-- The use of the railroad began to decline as autos became more affordable to people; around the 1920's, trucks began shipping freight, roads were being improved; railroads were struggling—some going bankrupt more than once.

In 1960, the Erie & Lackawanna Railroads merged.

In 1968, Norfolk & Western bought the shares

In 1972, the Agnes Flood created major damage especially in the Southern Tier; the Erie-Lackawanna filed for bankruptcy, and there was a great decline in shipping by rail.

In 1976, Consolidated Rail [known as CONRAIL] combined 7 railroads [CONRAIL sold the local track to Steuben IDA – then it became B & H Rail.

6.

#### RAILROAD BITS ...

1960 -- Erie & Lackawanna Railroads merged

1968 – Norfolk & Western bought the shares

1972 -- Agnes Flood-Major damage esp. Southern Tier

Erie-Lackawanna filed for bankruptcy

Decline in shipping by rail

1976 – Consolidated Rail -- combined 7 RRs [CONRAIL]

1976 – CONRAIL sold to IDA – then became B & H Rail



7. TRAIN TODAY – yes, the train still goes through Campbell.

8.



8. WAREHOUSE – This is a warehouse for the railroad at the end of Bemis Street. This is the former site of the D L & W Depot. The original depot, which was there, burned in the 1990's when it was owned by the Campbell Merchandise Mart who had also used it as a warehouse. Then it was rebuilt and sold to B & H Rail.



9.



9. B & H RAIL – The sign there on the warehouse [you can read it here] confirms that it's owner is B & H Rail.

10. SIGN –Going on a little further, over the tracks and looking to the left, we see – “Jim’s Equipment & Repair”. This site has had several businesses there over the years; most recently Jamison Marine, [that was George Jamison]; before that, Dickinson’s Garage and even further back, it was Stowell Equipment.



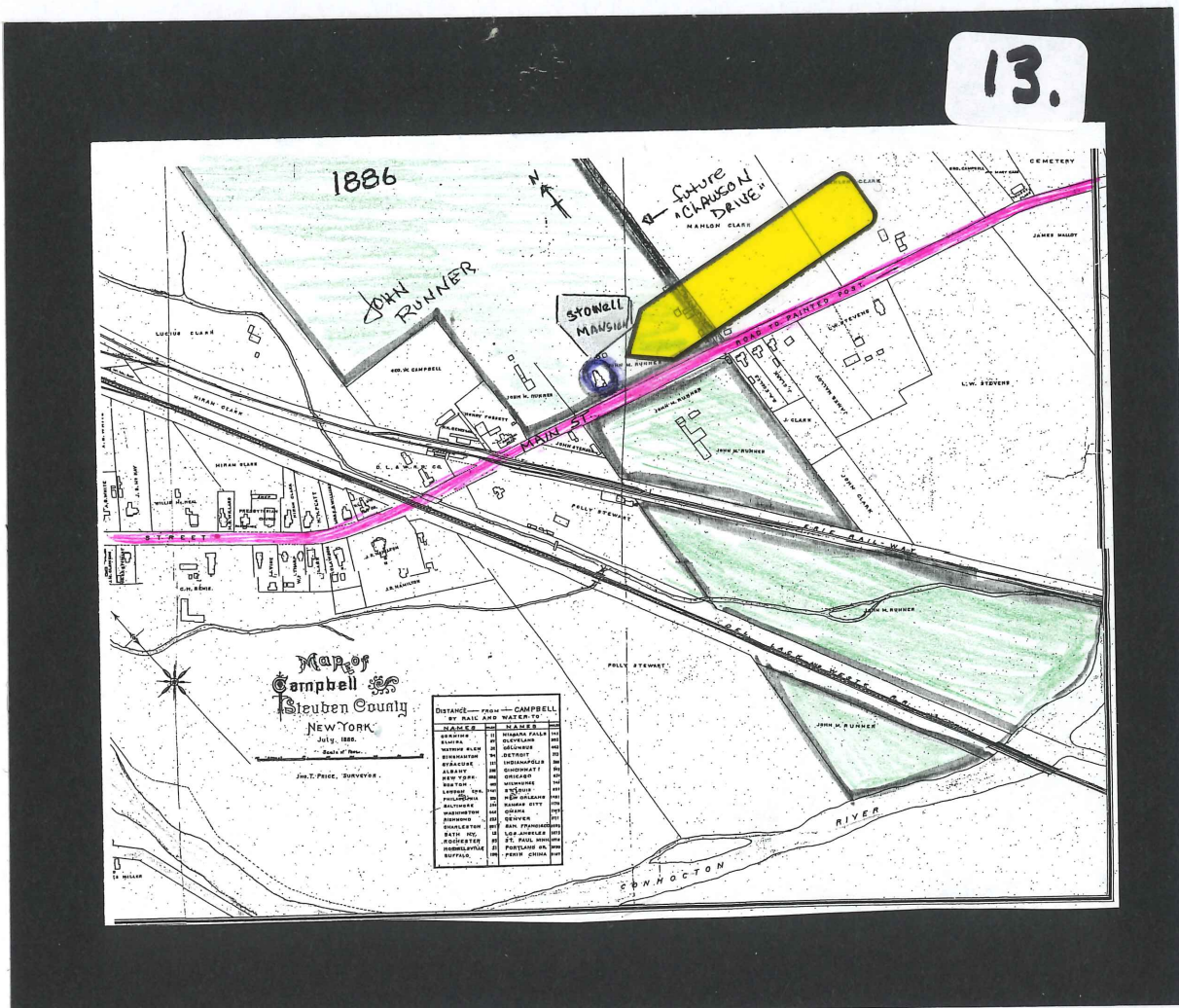
11. JIM'S EQUIPMENT –This was the Site of old Erie Depot platform station.



12. LOADER PIC – To the right –we see some tractor / loaders and the 4 lane exit ramp—this was the site of a tobacco and dairy farm over a hundred years ago.



13. MAP – 1886 This map shows the John Runner Farm – this was a 250-acre tobacco farm and mansion; the mansion was built just after the Civil War and has gone through a lot of owners over the years and pieces were divided off; I've marked the mansion location with a circle -- at the end of the arrow. Tobacco farms were in Steuben County as early as 1822.



14. STOWELL MANSION –this is what it looked like; it was built right after the Civil War[ so about 1866] and was described as a Victorian Majesty” a two story home with 16 rooms, and a lovely cupola. In the later years it was owned by Claude Stowell, who was a local attorney; he ran it as a dairy farm with some tobacco fields. Harvesting tobacco was a lot of work from seeding; then replanting the seedlings into hilled rows; then three tedious tasks—1] weeding; 2]remove secondary shoots; and 3] remove tobacco worms & beetles --- all done hunched over and by hand. Then at harvest, the plants were cut and allowed to wilt in the field for several hours; then strip the leaves from the stalks; take out largest fibers; then the leaves would be packed into hogsheads.[a very large wooden barrel]. A tobacco hogshead was used in British and American colonial times to transport and store tobacco. Fully loaded, a hogshead would weigh 1,000 pounds. This kind of farming would take a toll on the fertility of the soil; crops would grow well for 3 years and need to lie fallow for a while. This type of farming died out in the later 1940’s.

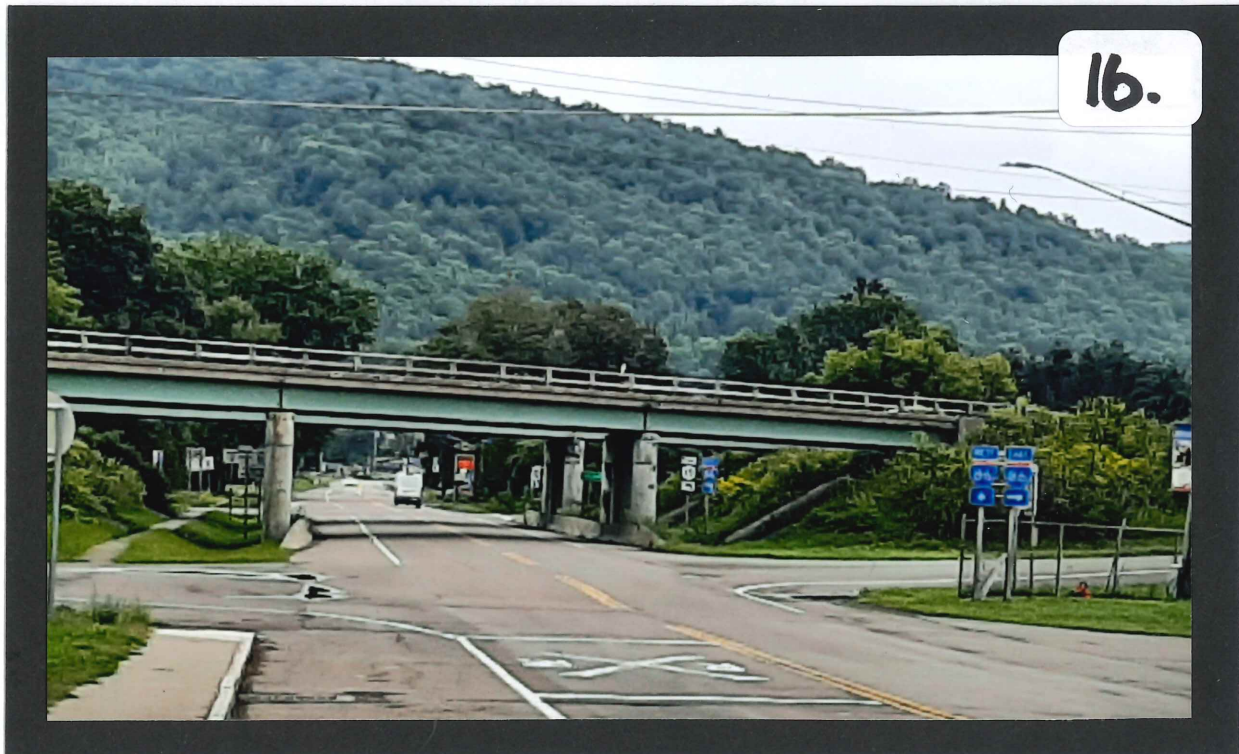


15. STOWELL IMPLEMENT AD –Back at the site we were just at [Jim’s Equipment & Repair] -- Basil Stowell ran the Stowell Implement Company there. Here his ad says: International harvester trucks – scouts --; and when his father passed on, Basil lived at the mansion.



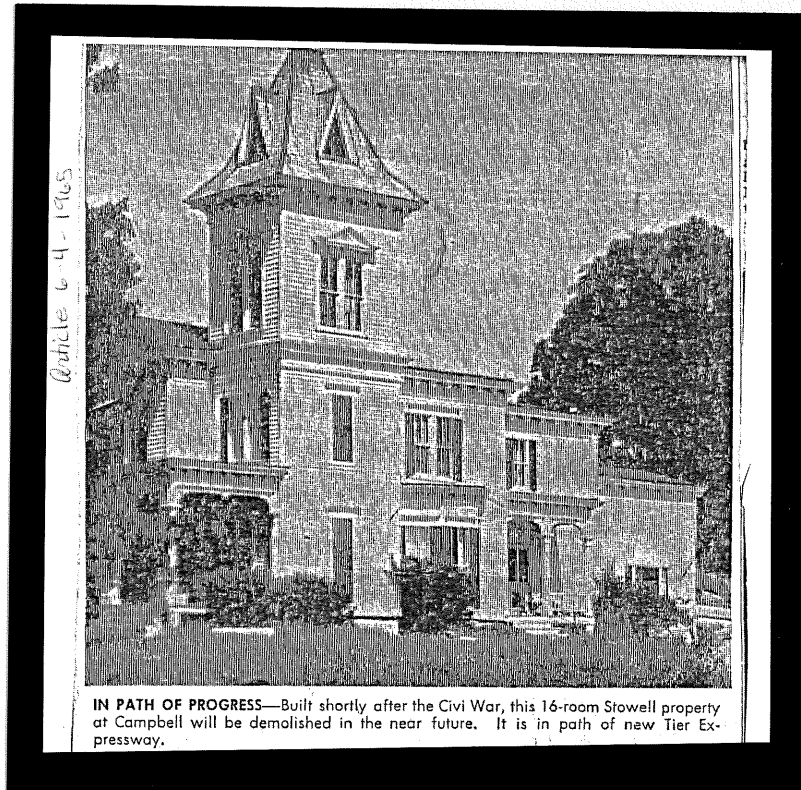
15.

16. 4-LANE AHEAD –Now, we are stepping back into the street and you see the four-lane ahead. The planning stage for the 4-lane occurred in the 1960's and unfortunately the Stowell mansion happened to be right in the path of the new planned Southern Tier Expressway.



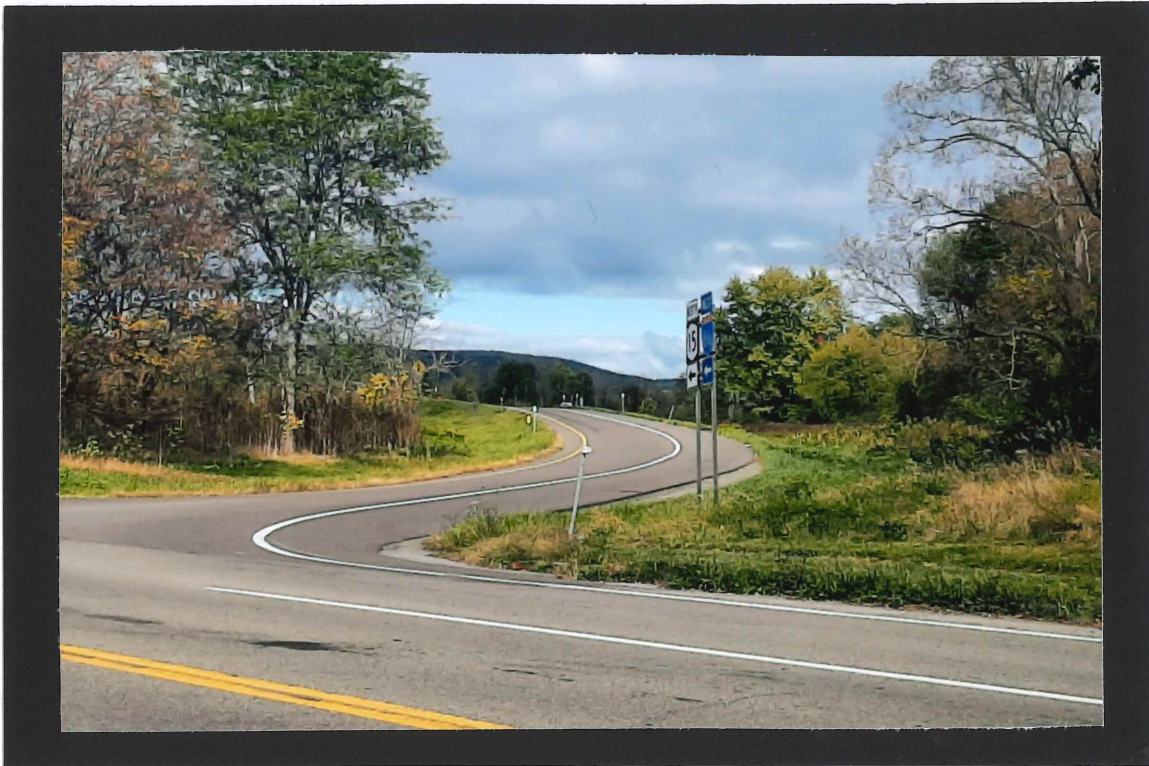


17.



17. **NEWSPAPER PIC OF STOWELL HOUSE**—Sadly, It was torn down in 1965 – this is from that news article; it was about 1970 when completion work on the 4-lane got as far as Campbell and stopped here over that winter.

18.



18. FOUR LANE ON-RAMP WEST BOUND – Looking to our left, this is about where the Stowell mansion stood. Now, before we go on down the street, let's step back to the cheese plant which is across the street.

19.



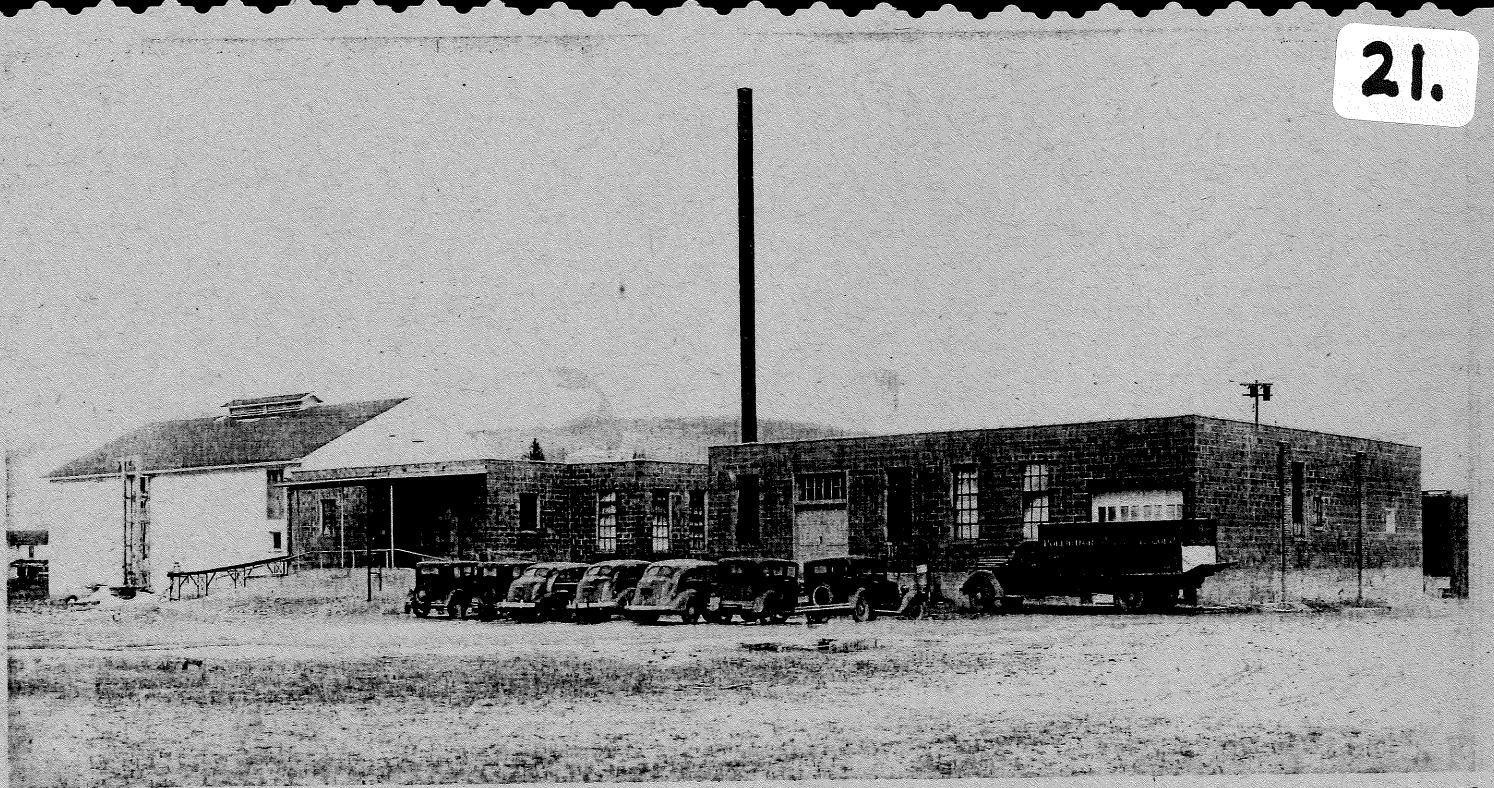
19. BEL GIOIOSO SIGN –Today the Campbell Polly-O plant is known as BelGioioso Cheese, Inc.—They still own the Polly-O rights to the string cheese sticks.

20. CHEESE PLANT –this is as it looks today and I have a little bit of background to share here . . .

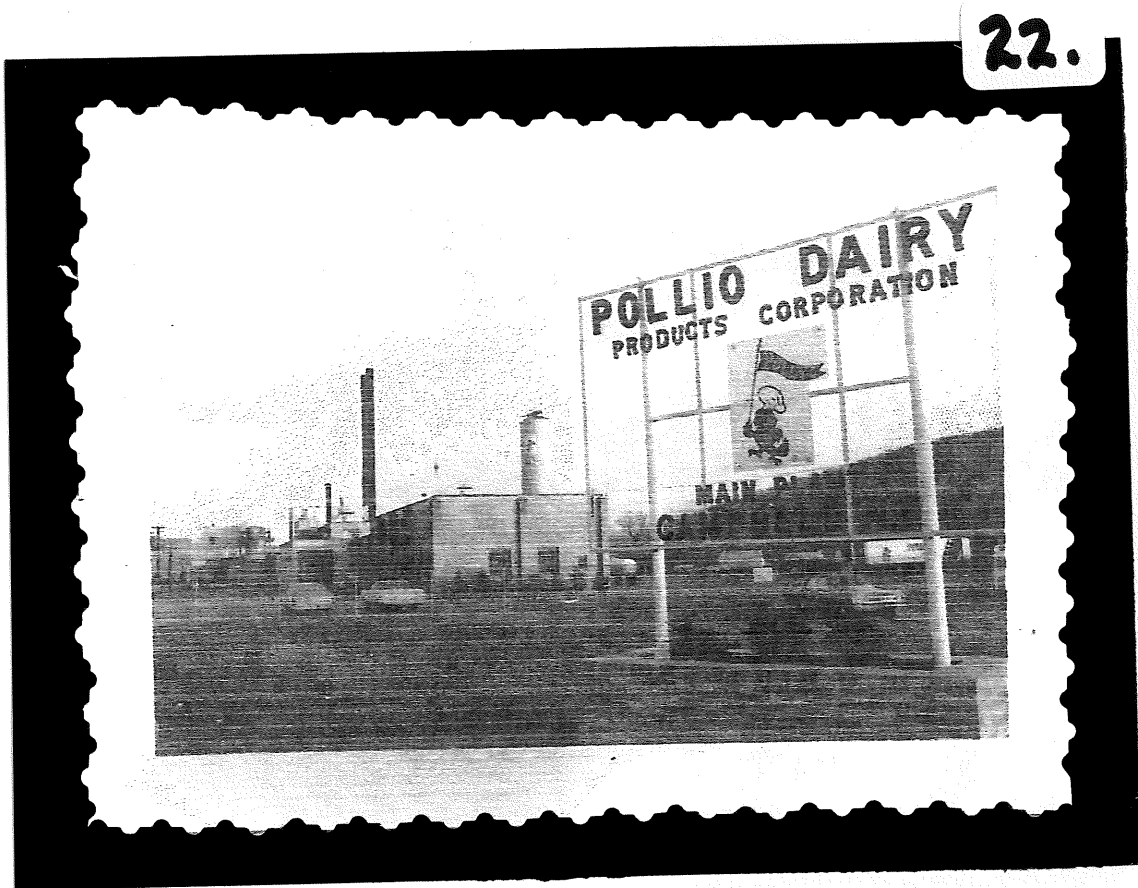
20.



21. POLLIO DAIRY PLANT -- This photo is from 1937. The cheese plant was named after the Pollio Family -- they had started a cheese plant in Thurston and needed a larger site so they moved here in 1937. They had partnered with the Russo family --Pietro Russo in about 1930; Pietro's sons were Tony, Lou and Sal.



22. POLLIO DAIRY SIGN. It was then called Pollio Dairy Products Corporation. Albert Pollio, who came from Italy with his father, Guissepe, in the early 1900's, by this time was greatly involved in the operation of the facility.



23. POLIO PANDEMIC—Only a few years later, the Polio epidemic hit the United States [1949-1952]. This was a really serious condition that affected children with paralysis; of course there was a vaccine that came out in 1954, but the idea of “Pollio” Cheese was not too appetizing.


## **POLIO PANDEMIC**

**23.**

- **Short for poliomyelitis**
- **Occurred in the U.S. in the years 1949-1952**
- **Paralysis**
- **Vaccine -1954**
- **Eradicated in 20 years**
- **Reason for the “Pollio” name change**

24. POLLY-O SIGN. The management came up with a new tactic to overcome this nemesis, and they changed the name -- you might say "Americanized" the name, to 'Polly - O' and came up with Polly the Parrot for advertising. Here you see the smiling parrot.

24.



**AMERICA'S  
OLDEST and LARGEST  
PRODUCERS of  
ITALIAN  
SOFT CHEESES**

*all of*  
**Get to know Polly-O®**

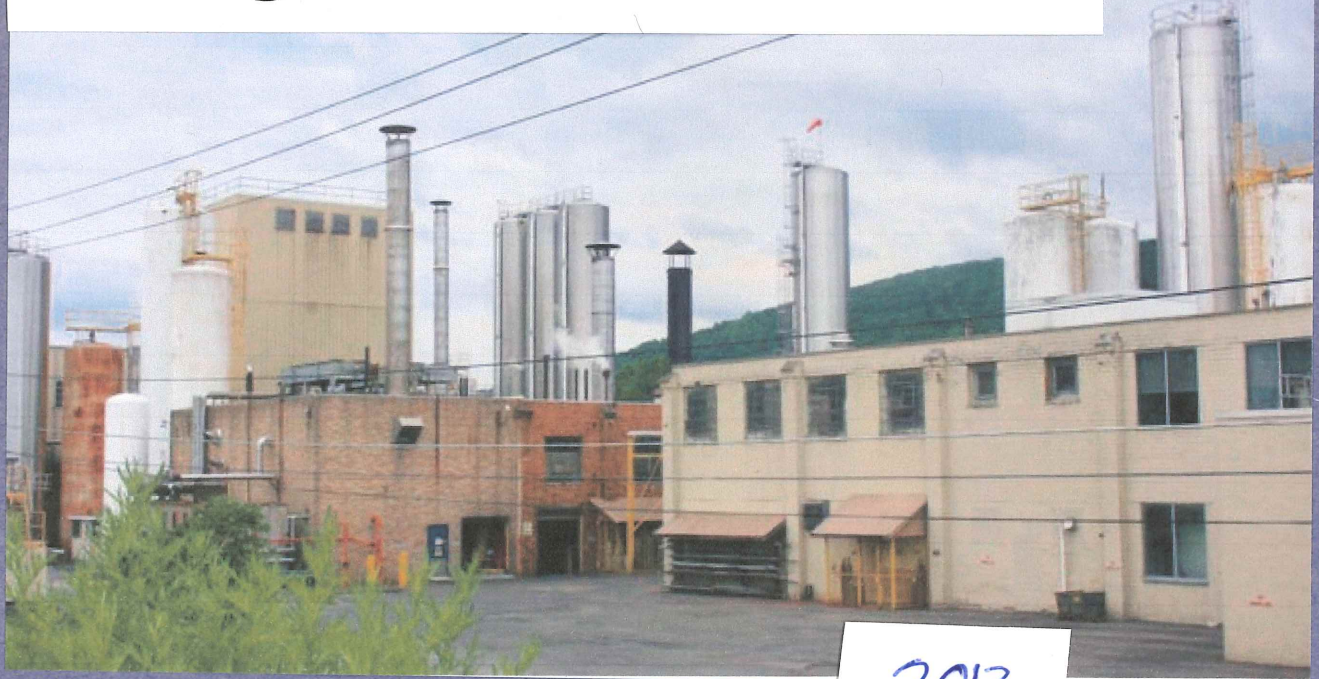
- Ricotta
- Mozzarella
- Low Moisture Mozzarella
- Domestic Cheeses
- Imported Cheeses
- Grated Cheeses
- Tomatoes
- Fruit Drinks
- Anchovies
- Clam Products
- Butter
- Peppers
- Spices
- Honey
- Olives
- Mushrooms
- Macaroni
- Bread Crumbs
- Greek Products
- Provisions



25. POLLY-O/ KRAFT. So, let us fast forward to 2013 –Kraft came along and bought out the plant—keeping the Polly-O name going. At some point, it became Kraft-Heinz -- and then it was facing closure in 2015.

## Polly-O / Kraft Plant

25.



2013

26. KRAFT SEEKING BUYER. By 2017, Kraft-Heinz wanted to sell the plant and down-size their operations. It was advertised it for sale.

## Plant still seeking buyer

**26.**



SCA FILES

27. UPSTATE FARMS. Finally by 2020, the cheese plant changed hands and the new owner was Upstate Farms Cheese, LLC.

FEBRUARY 23, 2020

\$1.55M to go toward plant upgrades

27.



SHAWN VARGO/SCA

28. BELGIOIOSO SIGN. After that it changed hands again last year in 2022 to BelGioioso Cheese, Inc; I note that they have kept the Polly-O brand name.



29. DANDY MINI MART. Over on the other side of the four-lane; we find . . . the Dandy Mini Mart, new to Campbell in about 2008.



30. CAMPBELL MERCHANDISE – OLD PIC dated about 1955; in the pic on the left you see the furniture store; and on the right, it shows the little house that was out back where the owner lived.

30.



31. CAMPBELL MERCHANDISE MART. This is a better picture of the front from about 1996.



32. CAMPBELL MERCHANDISE AD—Established 1955; it says ...home of low overhead prices, quality furniture and appliances; they were fortunate to not be in the path of the southern tier expressway; in about 2007 it was sold to Williams Oil—the Dandy Mini Mart.



**32.**

**CAMPBELL  
MERCHANDISE  
MART** – Sold in  
About 2007  
To Williams Oil /  
Dandy MiniMart

Operated by Marie York Stankiewicz for over 50 years.

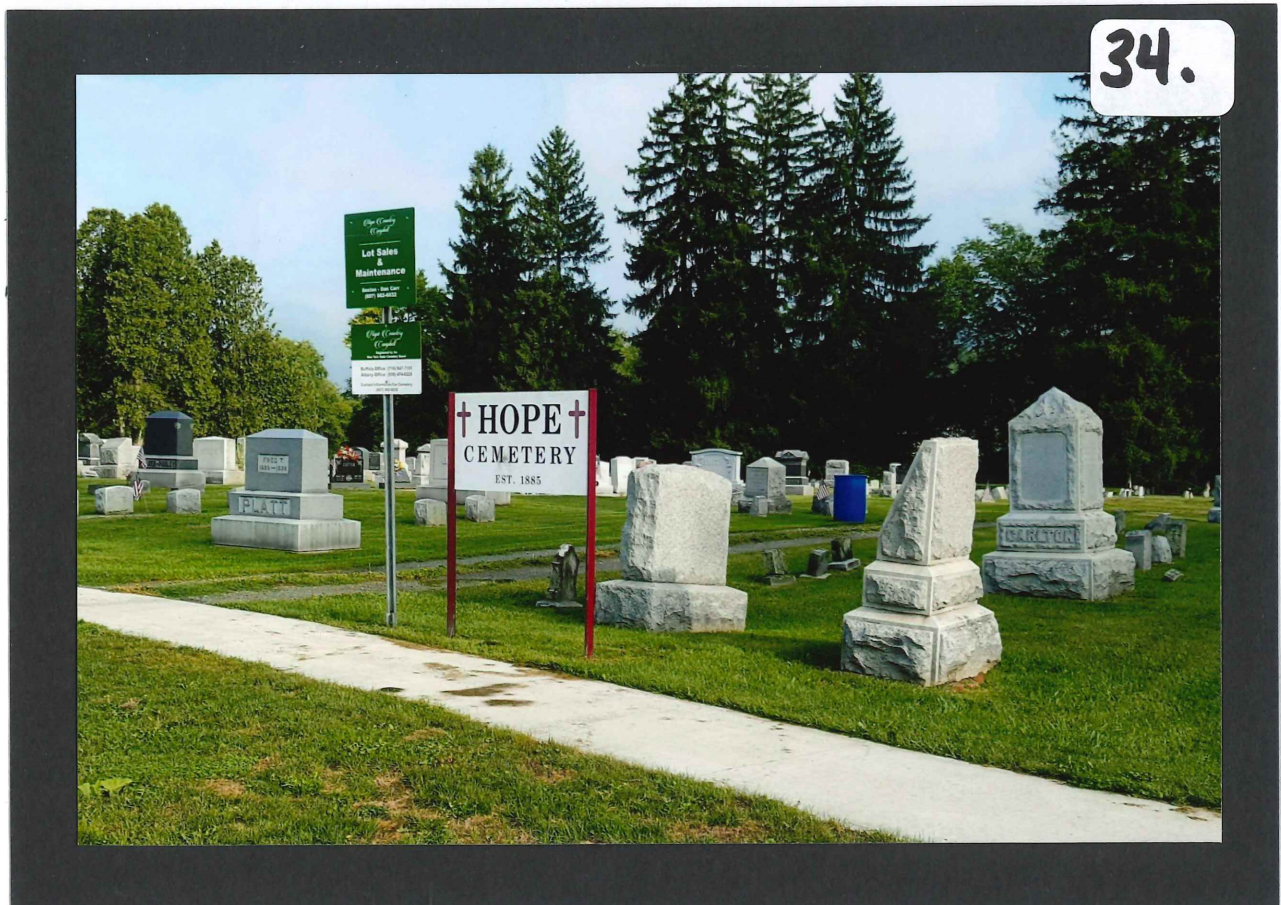


33. POST OFFICE –today we’re at the post office; just a note here the original plan for the post office was to be part of the new Town Hall plan in 1978; but that changed and the post office moved from the Platt building to this site in the early 1980’s ---



MOVING ON DOWN THE STREET . . .

34. SIGN: HOPE CEMETERY –Let’s make a short stop at the Hope Cemetery; there are some interesting things to point out.



35. CANNON –today—first of all there is the cannon; it is dedicated to Civil War heroes – there is a list of names on it and the date --1910 – come to find out, it is a replica; the original was sold by the Cemetery to the Museum of the Union Confederacy in 1999.



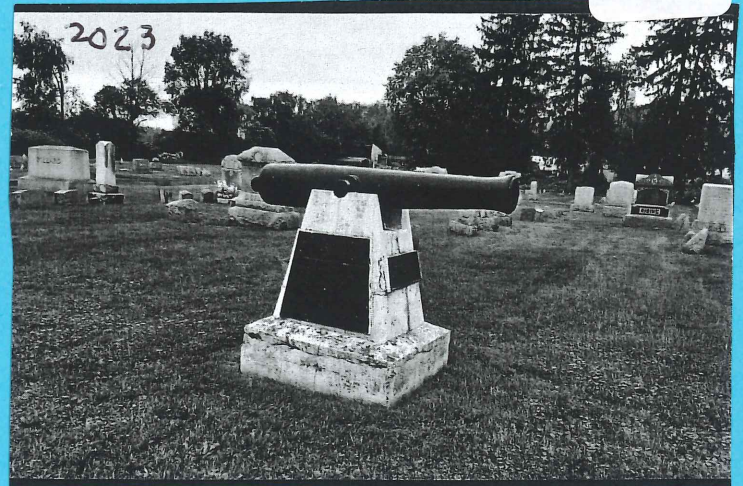


36. CANNON—This is a picture of the original cannon in this 1960 photograph.

37. CANNON –Let's compare! The original is on the left; The replica on the right. There is hardly a difference.

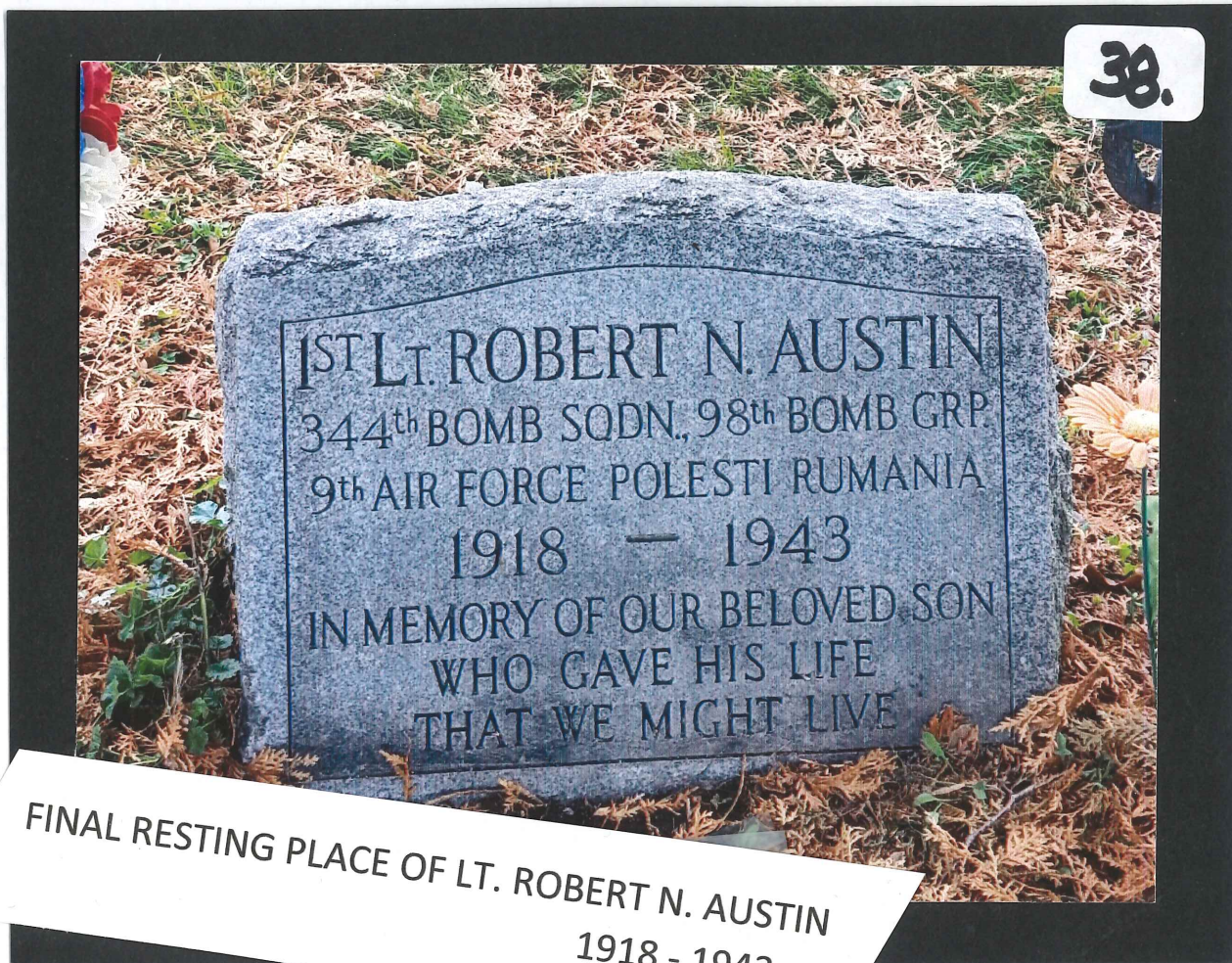


ORIGINAL



REPLICA

37.



38. ROBERT N. AUSTIN—final resting place- It was 1943 when he died in WWII; our American Legion bears his name; he was only the age of 25.

39.



OVER 125 VETERANS ARE BURIED THERE.

39. CEMETERY & FLAGS –There are over 125 veterans buried here.

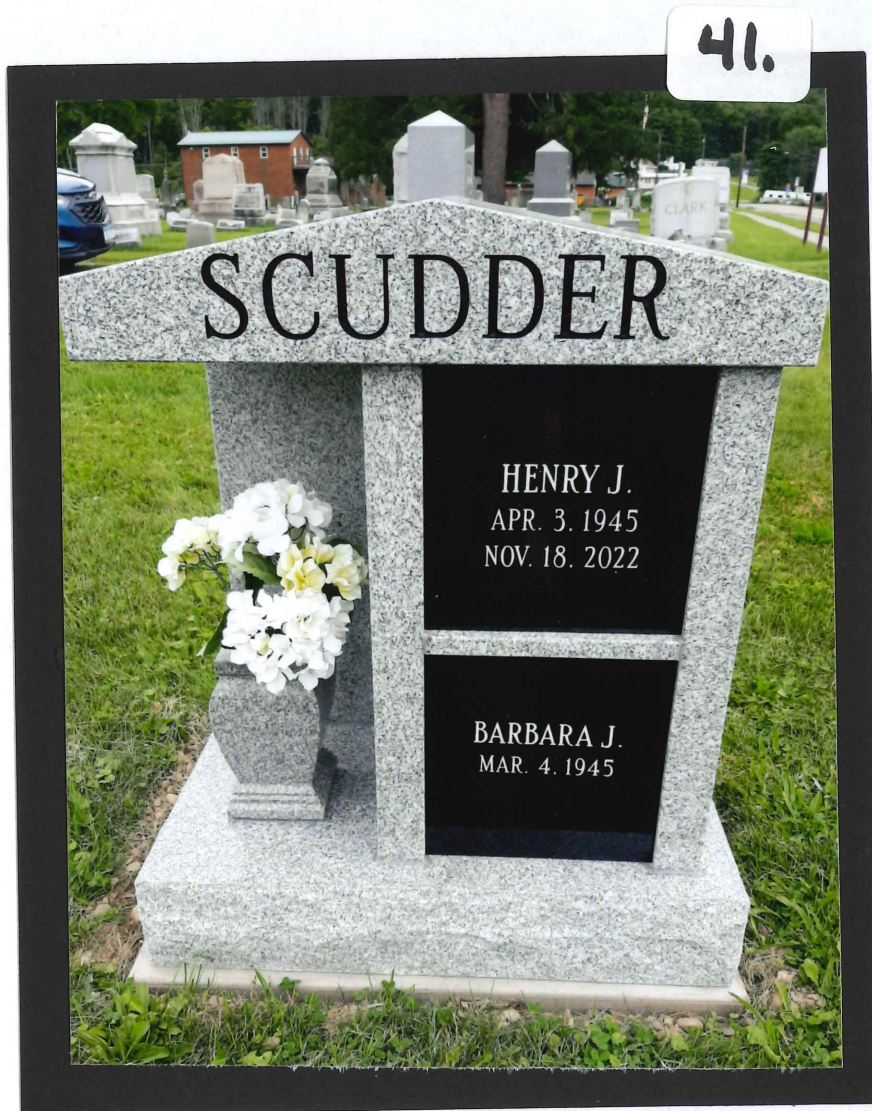
40. BRICK MONUMENT— this monument was presented by the American Legion in 1954; dedicated to Campbell Soldiers; each year at Memorial Day Ceremony, they present wreaths from the Legion and the Auxiliary.





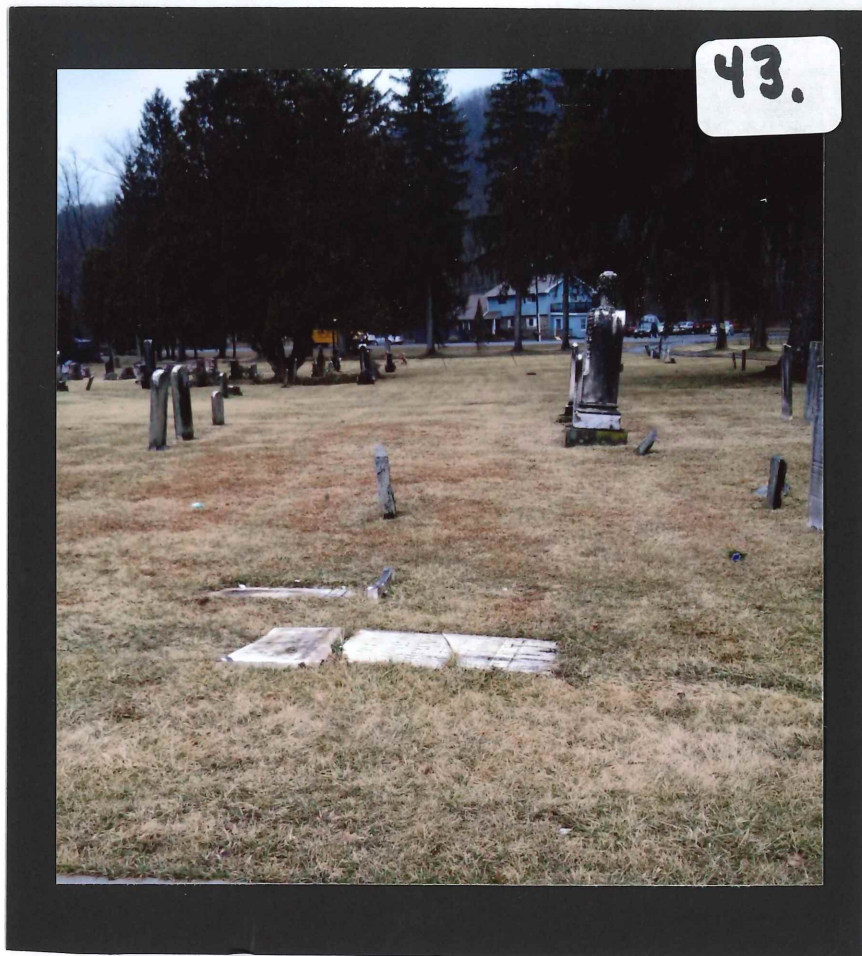
41. SCUDDER MONUMENT – new to the cemetery this year [2022] is the Scudder Monument; Henry J. Scudder passed away November, 2022; he a great, great grandson of JD Hamilton.

I must say that the monument is beautifully done.



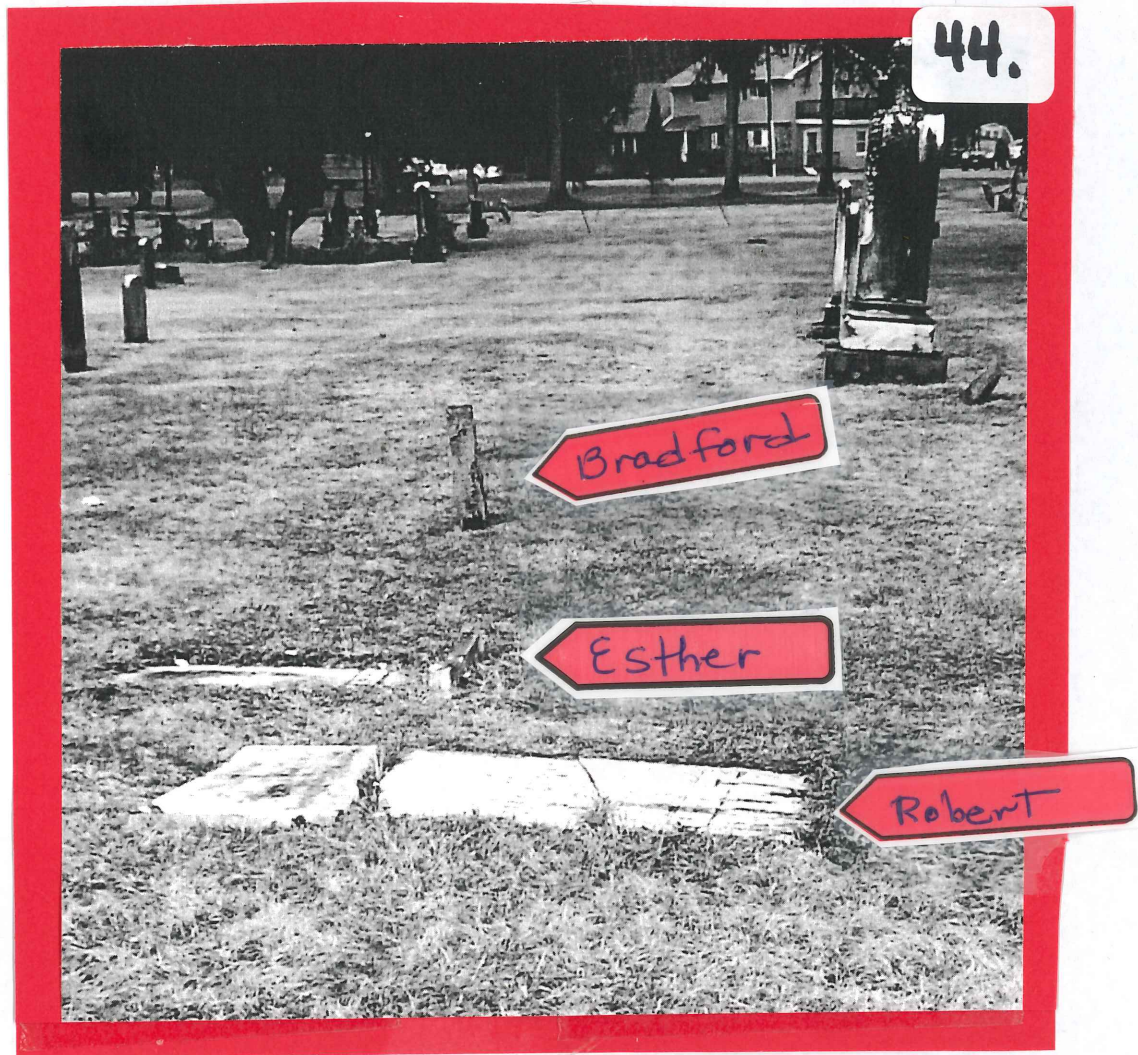


42. CHARLES S. SMITH SIGN. This sign refers to Dr. Charles S. Smith [1869- 1912]. He was the same Dr. Smith from the Smith block referred to in Segment # 3. He left part of his estate to Hope Cemetery and those funds were used to purchase the lower lot; that section is dedicated to his memory.



43. **ROBERT & ESTHER'S STONES** –This area is known as the pioneer section of the cemetery which began with the burial of the founding family's son, Bradford Campbell; he died just after the pioneer settlement began; his burial spot was marked with a plain stone -- and the next slide shows ...

44. BRADFORD, ESTHER & ROBERT –Take a closer look at this same spot. Those stones on the ground are those of the Town’s founders—this was a photo from 2011.



45. NEW CAMPBELL MONUMENT. - This is the new monument that was done in the community a few years ago that I helped to organize. It is the burial place of the Rev. Robert Campbell, who died in 1817; and his wife, Esther Campbell, who died in 1819. Community members came together and donated funds to help me make this project happen.

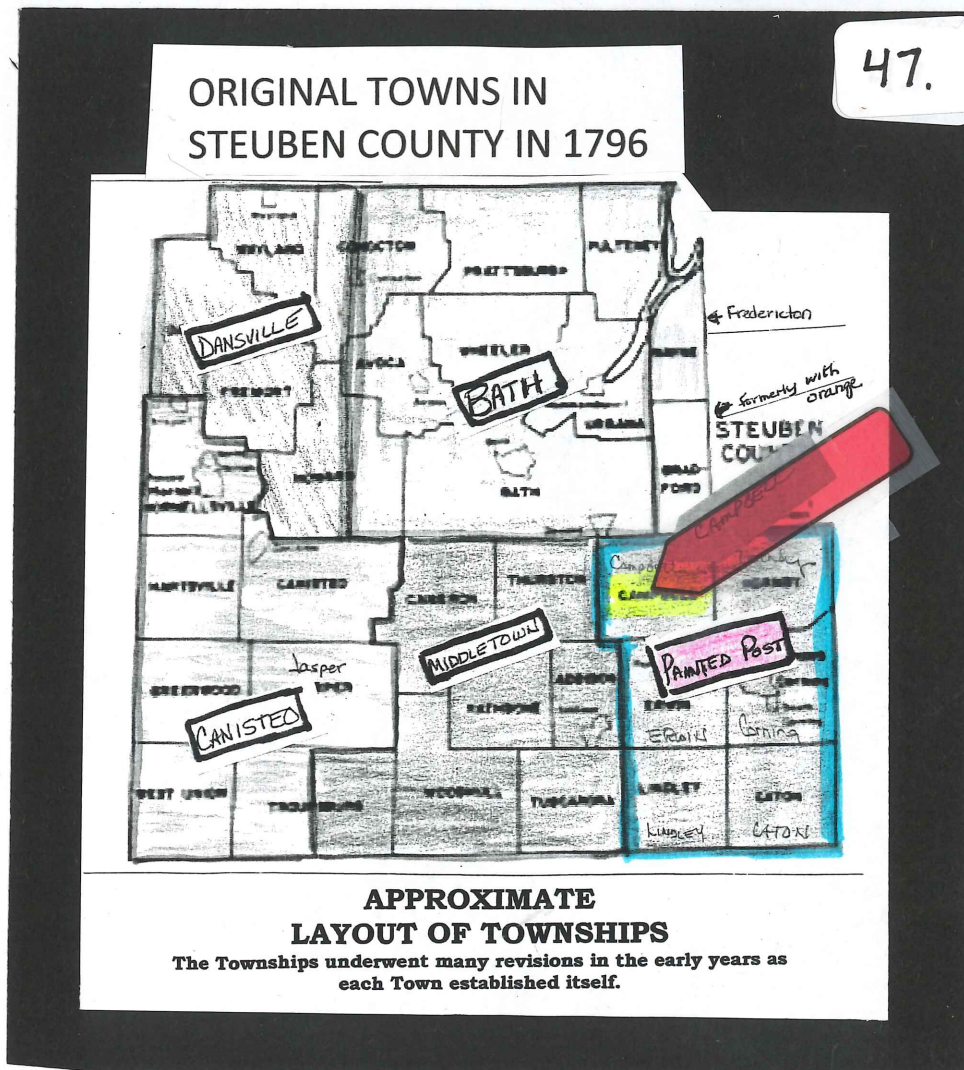


46. DRAWING on the monument –the house on the hill—artwork by Ted Brennan there is a little history on the monument about the family and the settlement; it says Robert & Esther Campbell—founding family of the Town of Campbell – established April 15, 1831; the Campbell family arrived in 1801 and began the settlement called “Campbelltown”; their home was built on the hill overlooking Hope Cemetery, because from there they could see the grave of their son, Bradford Campbell, who was the first burial in 1804.

46.

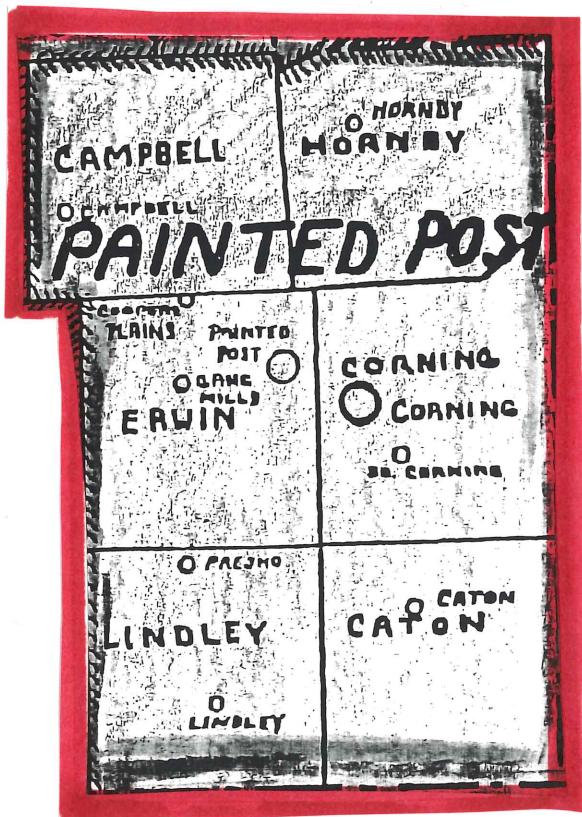


47. MAP –I want to let you know, we are in Campbelltown; this map shows 1796 map of Steuben County where there were 6 towns laid out; we're here at the red arrow in the Town of Painted Post. But there were no Campbell's here in 1796 – the land at that time was a dense wilderness with Indian paths for roads. There were giant pine trees, and hemlock, maple and cherry trees.



48. The next map shows that from 1796 to 1826, our land is part of the Town of Painted Post – history books says that Robert Campbell purchased half the Town –That means Campbelltown, I believe. So, stop and think about it, he purchased a spot in the wilderness that ended up being here. It took woodsmen, surveyors and settlers to gradually cut in the roads.

48.



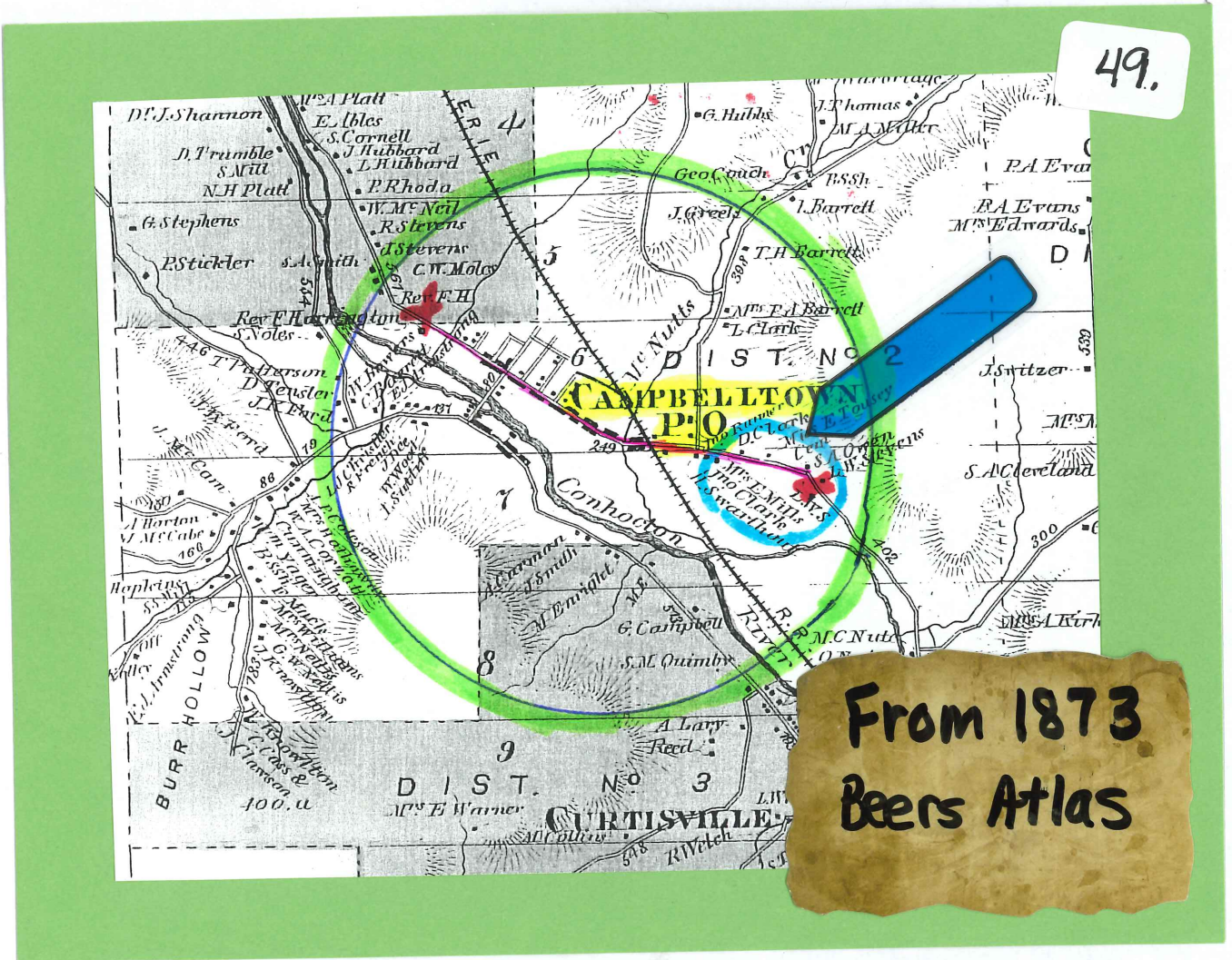
**1796 -1826 --- PART OF  
PAINTED POST**

**REV. ROBERT CAMPBELL  
had purchased  
“half the Town”**

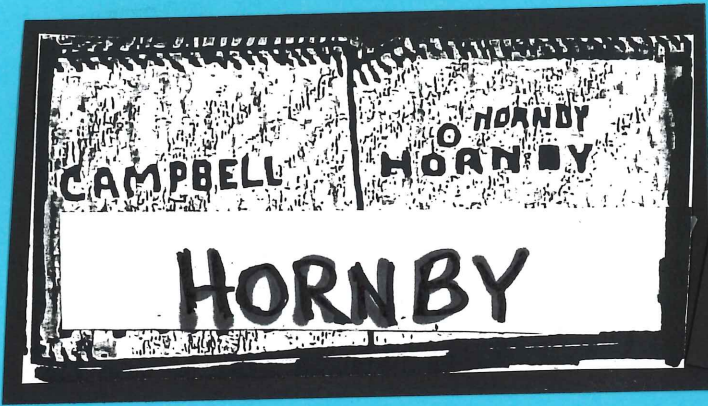
**Referred to as . . .  
Campbell’s Town; and then  
Campbellstown; and then  
Campbelltown.**



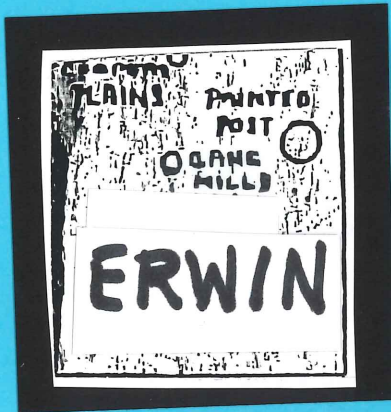
49. CAMPBELLTOWN MAP – On this map [1873] which was many years later, it was still referred to as Campbelltown.



50.

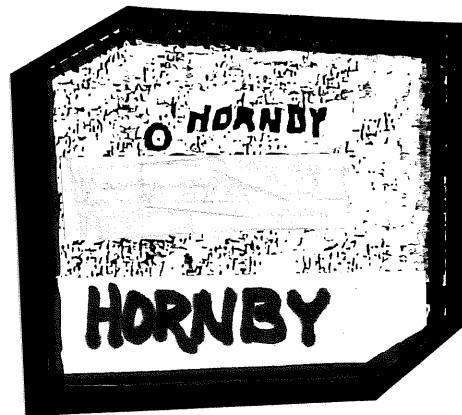
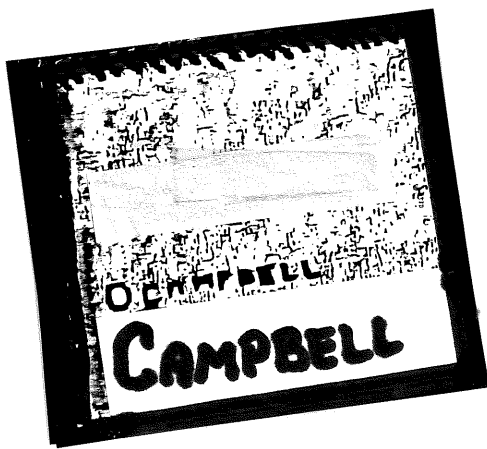


1826 - HORNBY BROKE OFF  
WITH LANDS WHICH  
INCLUDED CAMPBELL



1826 - ERWIN

50. HORNBY & ERWIN. As time went by, in 1826, Campbell and Hornby broke off together and called it Hornby; that same year Erwin established itself.

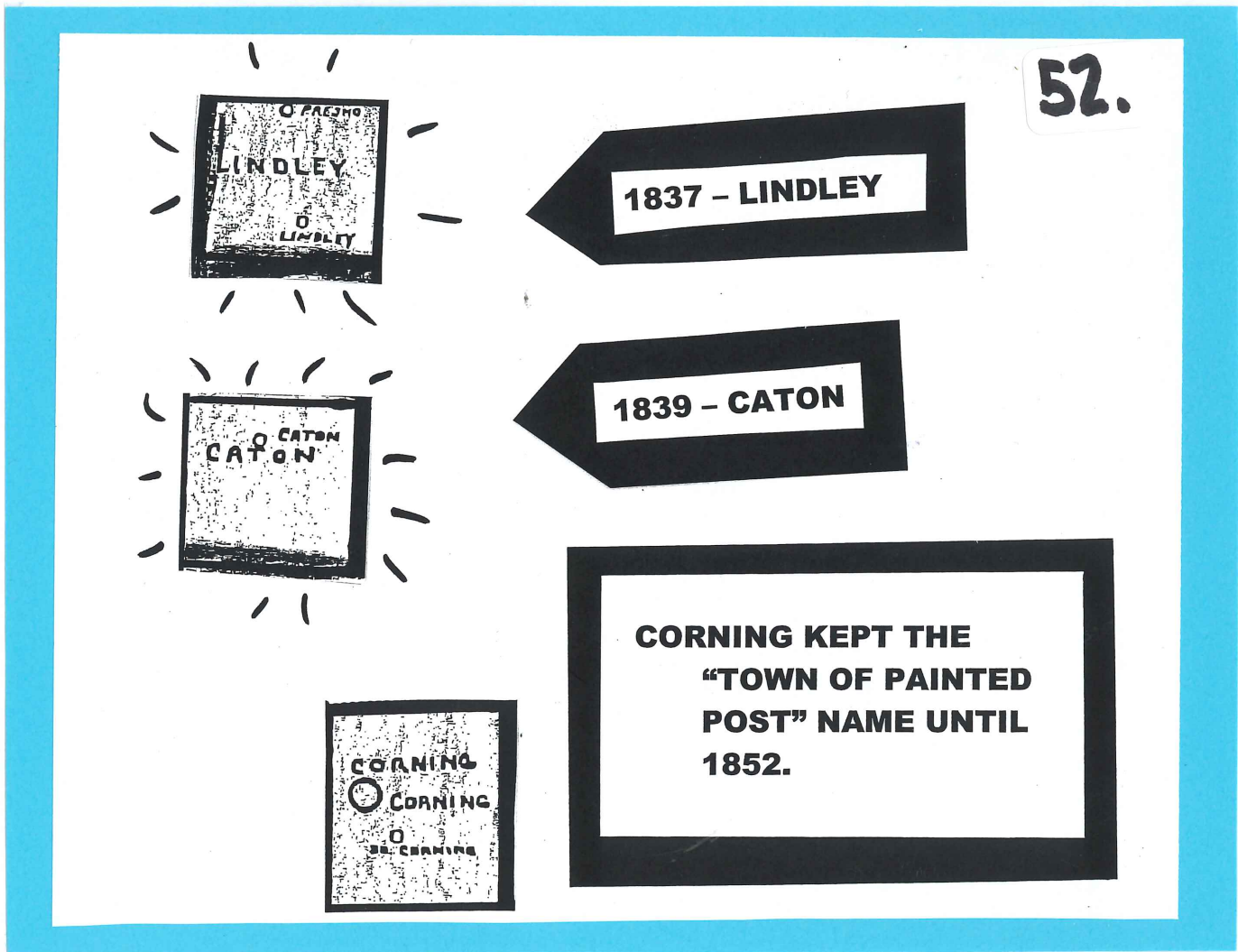


51.



51. [NEXT BREAK] In 1831, Campbell broke away from Hornby and folks wanted to name it "Cam- bull" after the founding family.

52. [BREAK] -- Then, in 1837 – Lindley broke off; in 1839, Caton formed and Corning kept the name until 1852. So on that note, let's visit Campbelltown today.

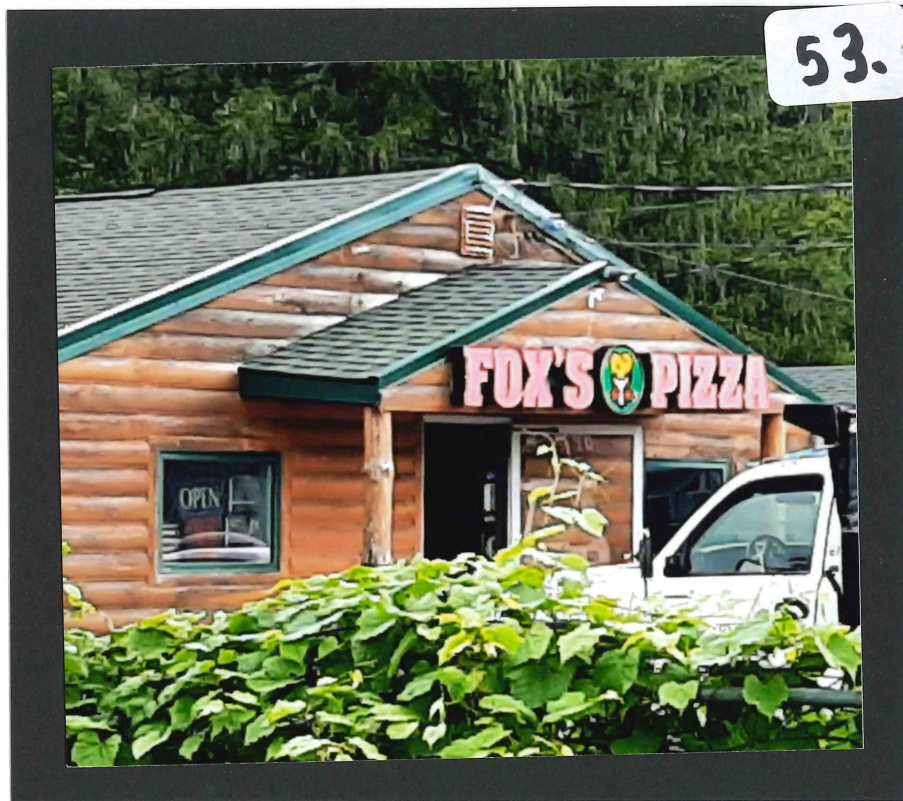


52.

1837 - LINDLEY

1839 - CATON

**CORNING KEPT THE  
"TOWN OF PAINTED  
POST" NAME UNTIL  
1852.**



53. FOX PIZZA –now we’re going to take a little tour – first, here’s Fox’s Pizza [fairly new to that end of the street] then ..



54. LOG CABIN. A photograph from today [2022] -- It has been known as the "Log Cabin" for a number of years. A little history here to share with you ...

55.



55. LOG CABIN. This is a copy of a post card –from about the 1940's showing the Log Cabin with a fence around it.

56.



Log Cabin, Campbell, N. Y.

CIRCA 1940s

56. LOG CABIN. This is a quick peek inside of the Log Cabin shown by this 1940's post card.



57. LOG CABIN fires—before you tell me this not the same log cabin – you need to see this --- news articles; they had a couple a fires in there over the years; one in 1924 and one in 1947.

In 1924 it was run by Harry Eccles; it was totally destroyed with all the fixtures; unknown origin. Then it was rebuilt.

Then the 1940's post card [shown above];

Then in 1947, it was owned by Lester Littell; a fire started in the boiler room in the cellar and swept through the kitchen; NOTE the fire chief was Gilbert Scudder and Fire Commissioner, Eldon Packard, was also there.

57.

# "LOG CABIN" 1924 IS BURNED

CAMPBELL, Oct. 6.—The building owned and run by Harry Eccles of this place known as the "Log Cabin", about a mile from Campbell, was totally destroyed with all fixtures last night about 12 o'clock. The fire is of unknown origin.

The restaurant had been closed about 10 o'clock and Mr. and Mrs. Eccles had been home but a short time when the fire broke out.

The loss is about \$2,000 and is entirely covered by insurance.

1924

1947

## 3 Hurt, \$8,000 Loss In Campbell Blaze

Campbell — Three persons were injured and a 6-year-old Persian cat suffocated in a fire which destroyed all equipment and caused \$8,000 damage to the Log Cabin Inn at the old Campbell and main Bath-Corning highway at 5:40 a. m., Monday.

Those injured were Lester Littell, co-owner of the Inn who suffered wrist and right arm burns; Fire Chief Gilbert Scudder, who received leg bruises while attempting to rescue Fire Commissioner Eldon Packard, hit by a falling rafter. Mr. Packard suffered left side bruises.

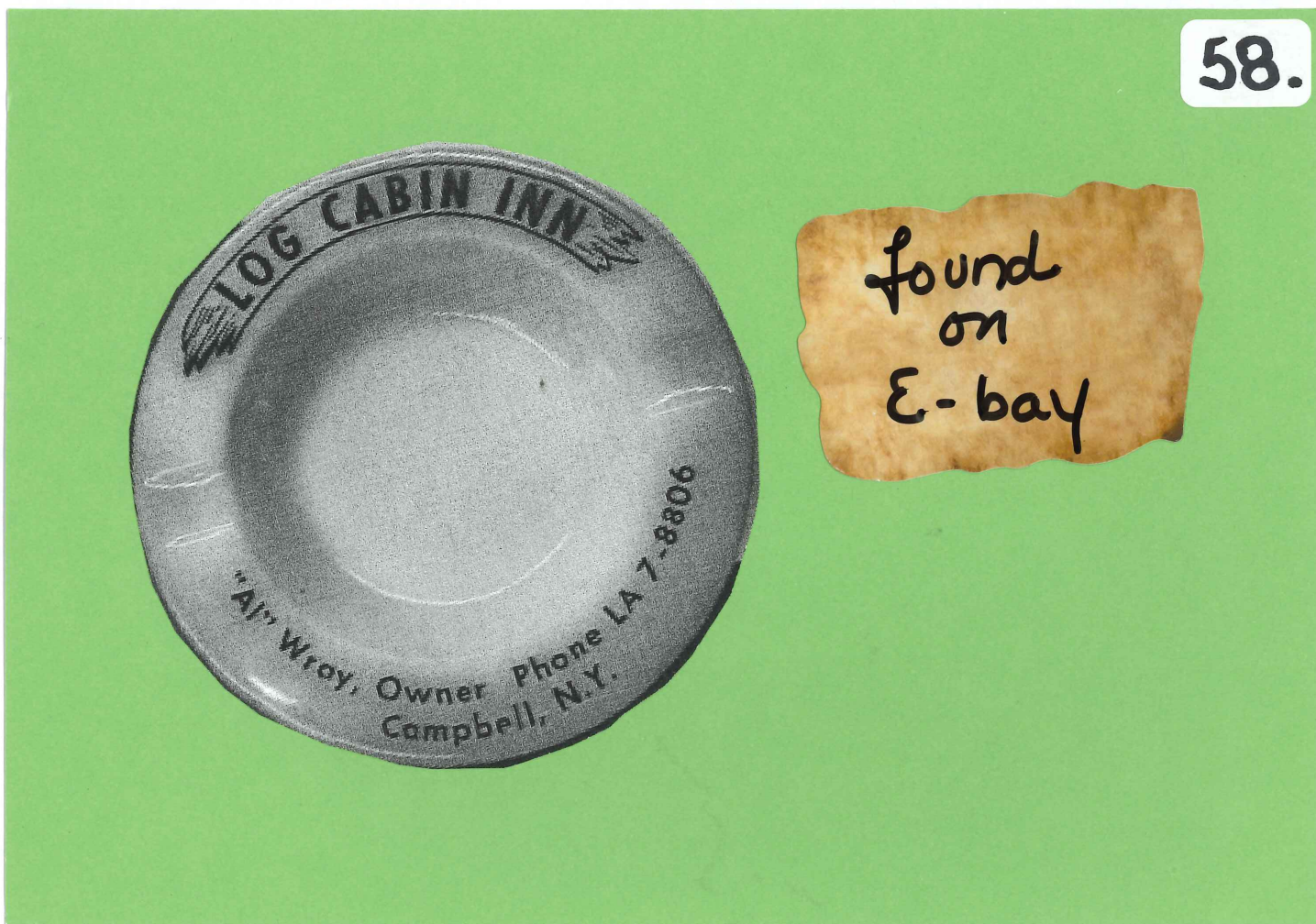
The pet cat was owned by Arley Bates, operator of the Inn with Mr. Littell.

The fire is said to have started in the boiler room in the cellar and swept through the kitchen. The owners said they plan to begin rebuilding this week.

The Campbell Fire Department fought the blaze for two hours.

1.3.47

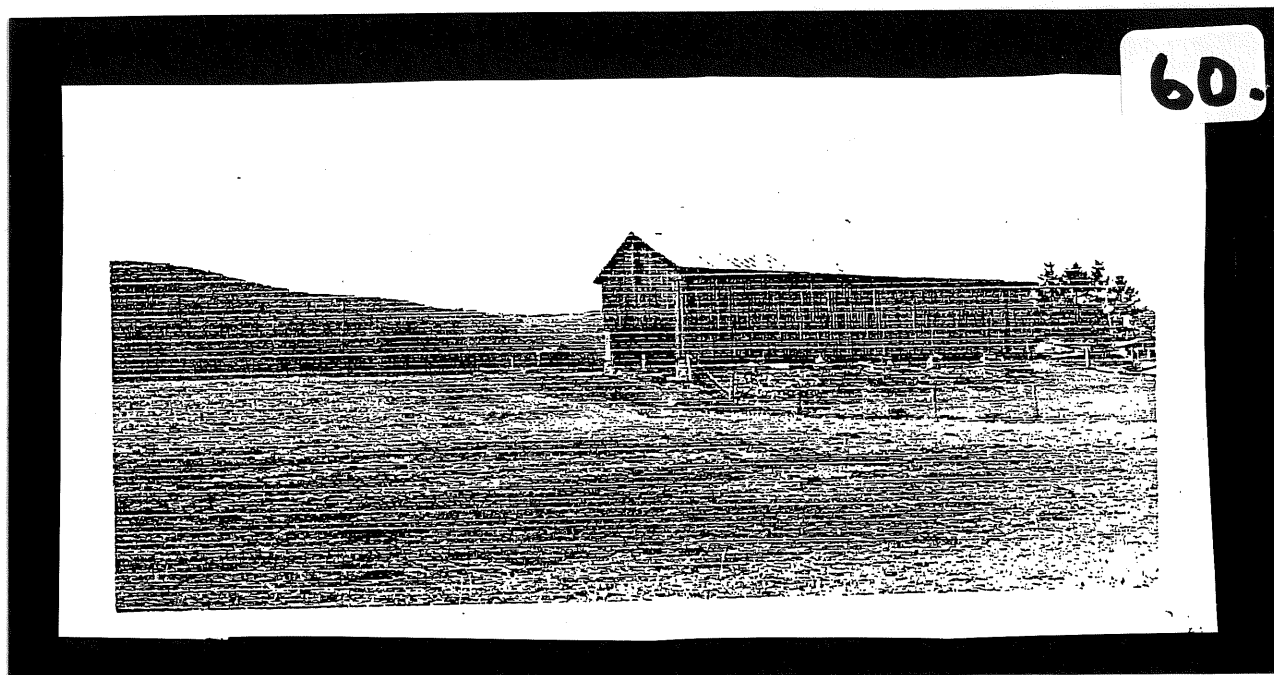
58. LOG CABIN- An interesting tid bit here – is an ash tray [found on e-bay]; It says their phone number and owner, "Al" Wray.



59. PERSONIUS. Over here on the right is the Personius building – it was at one time a repair garage; and at one time a tobacco barn.



60. TOBACCO BARN—note the similarity to a tobacco barn in the area.

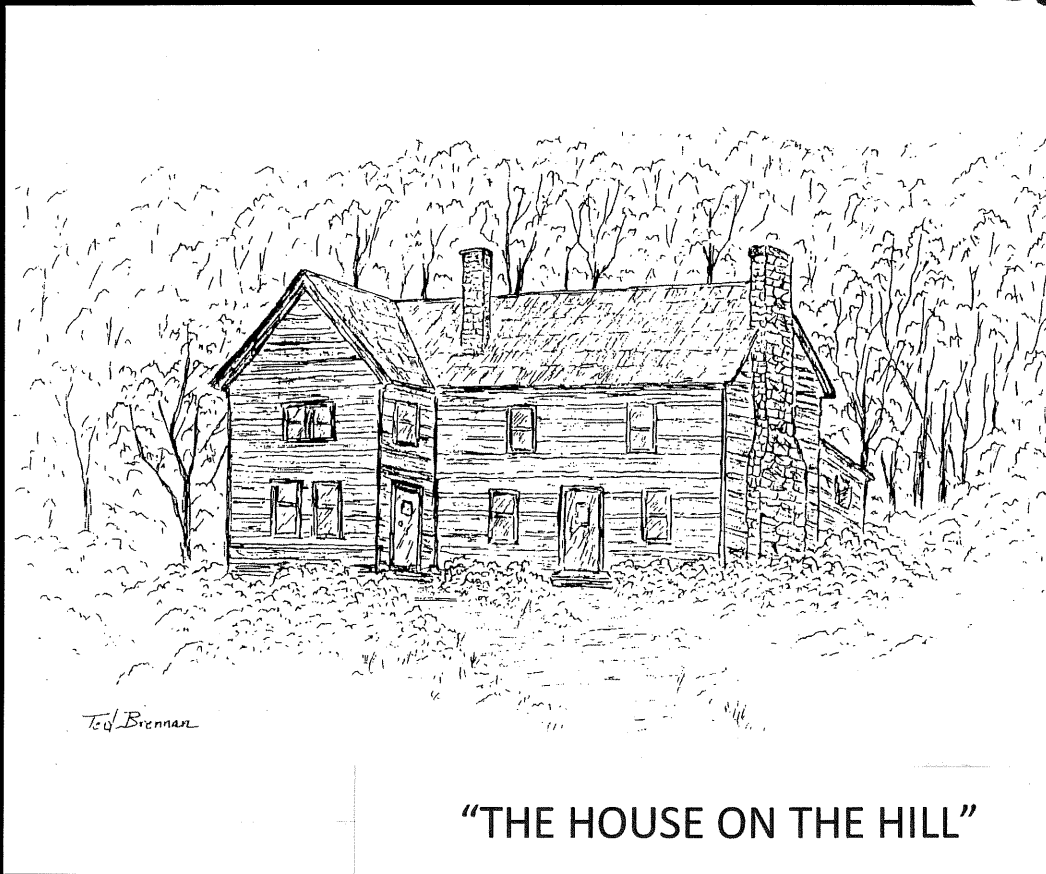


61. CHAMPS RESTAURANT—then finally Champs – this is where Legend has it that Rev. Campbell had built his house on the hill that we tried to depict on the grave marker; the house had several owners over the years, and stood there until about 1877 when it burned. SO, the next time you go past there, remember the story, and the next slide ---



62. HOUSE ON THE HILL – As we have reminisced about Campbelltown, this is a fitting place to end our story. I hope you all have enjoyed the history and found it interesting.

62.



“THE HOUSE ON THE HILL”

63. END OF PRESENTATION. – Thank you for joining me for this presentation.

63.

THIS IS THE CONCLUSION  
OF CAMPBELL'S  
"OLD MAIN STREET –SEGMENT #5"  
[RAILROADS IN CAMPBELL  
TO THE END OF MAIN]

64. THANK YOU AGAIN!! And look for more presentations in the future.

----Sandy Austin, Campbell Town Historian

64.

**THE END**

**“CAMPBELL’S OLD MAIN STREET”**

**SLIDE PRESENTATION**

**Compiled by:**

**Sandy Austin, Town Historian**