

CAMPBELL'S  
OLD MAIN STREET

*A Historical Presentation*

*By: Sandy Austin, Town Historian*

2023

*A PICTORIAL SLIDE TOUR*

## CAMPBELL'S OLD MAIN STREET SLIDE PRESENTATION

BY: Sandy Austin, Historian

### **SOURCES**

Clayton's 1879 "History of Steuben County, New York with Illustrations".

Hakes, Harlo – 1896 "Landmarks of Steuben County, New York".

Hope Cemetery –headstones

MAPS –1873 Beers Atlas Map

--1886 Map of Campbell

--1930 Map of Campbell Hamlet

NEWS articles saved

OBITUARIES saved

Peer, Dick – Editorial writings.

Post Cards – [and copies of post cards] various -- which people have shared.

Thrall, H.B., Compiled by --Pioneer History & Atlas of Steuben County, NY  
compiled from Historical & Official Records.

Town of Campbell Reconnaissance Level Survey, as prepared by the NYS  
Historic Preservation – 2015.

Wikipedia – various topics.

OLD MAIN ST SEGMENT #1 -- SCHOOL TO END OF THE CHURCHES / CHURCH STREET [THEN UP NEXT: BUSINESS BLOCK WEST]

1. WELCOME -- This is the Title Page of the over-all presentation covering the entire Main Street which I have broken up into 5 segments.

1.

**CAMPBELL'S -- "OLD MAIN STREET TOUR"**  
**AS PRESENTED BY: SANDY AUSTIN, TOWN HISTORIAN**

**SEGMENT #1 [COVERS FROM THE SCHOOL TO THE END OF THE CHURCHES]**

**SEGMENT #2 [IS THE 'BUSINESS BLOCK' -- WEST]**

**SEGMENT #3 [IS THE 'BUSINESS BLOCK' -- EAST]**

**SEGMENT #4 [IS FROM LAVARNWAY HOUSE TO THE RAILROAD]**

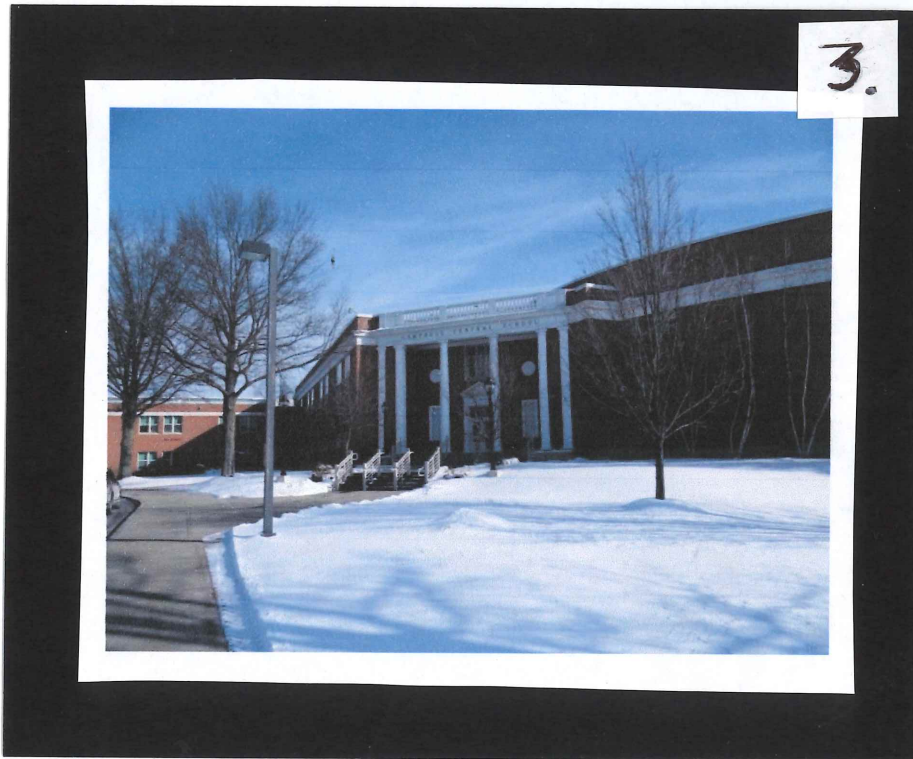
**SEGMENT #5 [IS FROM THE RAILROAD TO THE END OF THE STREET]**

2. SEG Title #1 -- For our first segment, we will begin at the Campbell School and travel down Main Street to end of the churches, which will cover basically to Church Street.

2.

CAMPBELL'S  
"OLD MAIN STREET SEGMENT #1"  
[SCHOOL TO END OF CHURCHES]

3. SCHOOL – Here we are at the school. [This is a photo taken by historical preservation about 2015] The use of columns is from ancient Greece and Rome and thought to convey power and authority; also said to give a structure “curb appeal” and to give you the feel of importance. It was described by them as a two-story brick institutional building with Greek Revival detailing. The front entrance is ornamented with four square vernacular Doric columns with two pilasters to match. The front façade features have remained untouched.



4. "A LITTLE SCHOOL HISTORY" – 1802 was the first year of settlers coming to the town—the pioneers would have a central building --- someone's home—to hold school and also religious services -- in their own settlement—then as settlements grew -- -- THEN CAME A NEW ERA .... In 1810, the New York Legislature passed the "Common School Act" to create a public school system and to set up school districts in each township – this would be grades 1-8. -- They tried to set it up so no child had to walk more than 1-1/2 miles [a half hour's walk] to a one-room school.

4.

#### "A LITTLE SCHOOL HISTORY"

- 1802 – PIONEERS' SCHOOL
- 1810 – NY PASSED "COMMON SCHOOL ACT" --- Public school – Grades 1-8
- 1831 – one-room schools

5. LITTLE RED SCHOOL HOUSE PIC – Here is an example of the one-room school. This particular one is the school house of District School #5 in East Campbell where Thomas J. Watson attended; this building is still there and is designated a historical site. Thomas Watson lived on Dry Run Road and attended this school in 1870's and then the Addison Academy for high school –later he went on to found the company called IBM.



6. HORSE-DRAWN BUS PIC—as progress made it's way to Campbell, along came a school bus; horse-drawn, that is!

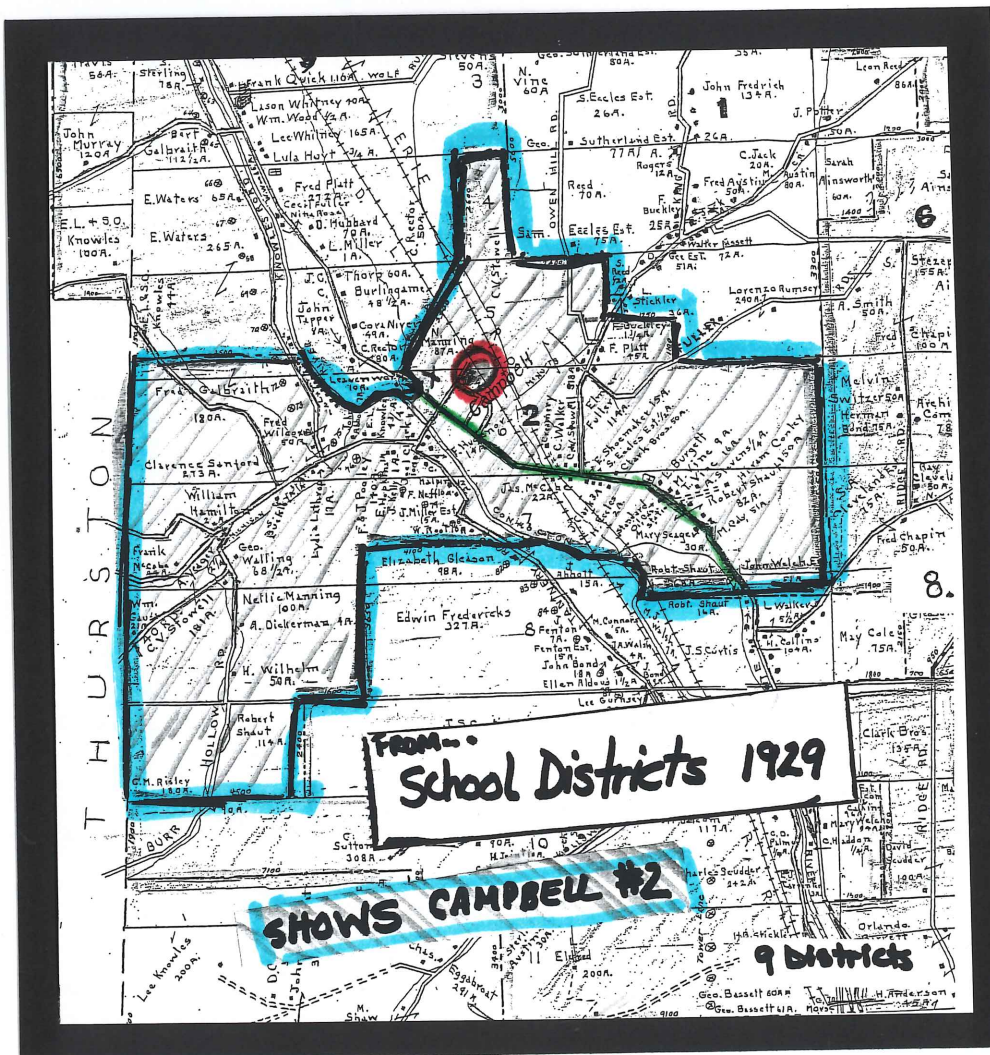
6.





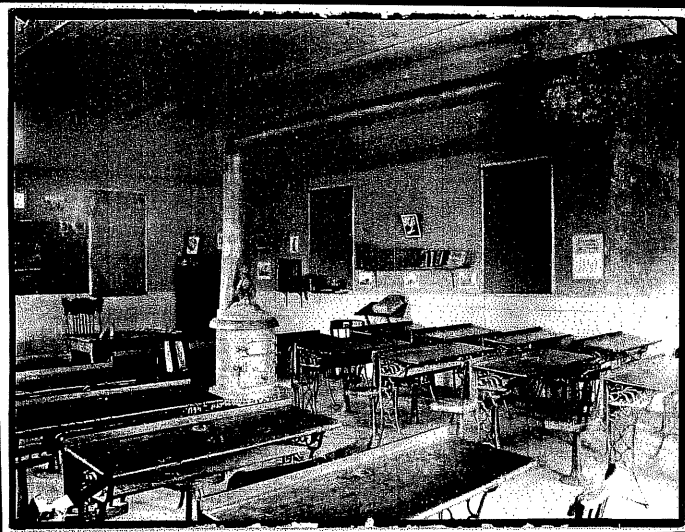
7. MAP OF UNION DISTRICT -- In the later 1800's as the population grew as in our hamlet [-or "village" as they called it then] a union school was allowed to combine districts and they would have more than one room; ours was the Union Free School District No. 2 -- NOTE the Full copy of the Map—we ended up with 9 school districts

TAKE A PEEK INSIDE OUR UNION SCHOOL . . .

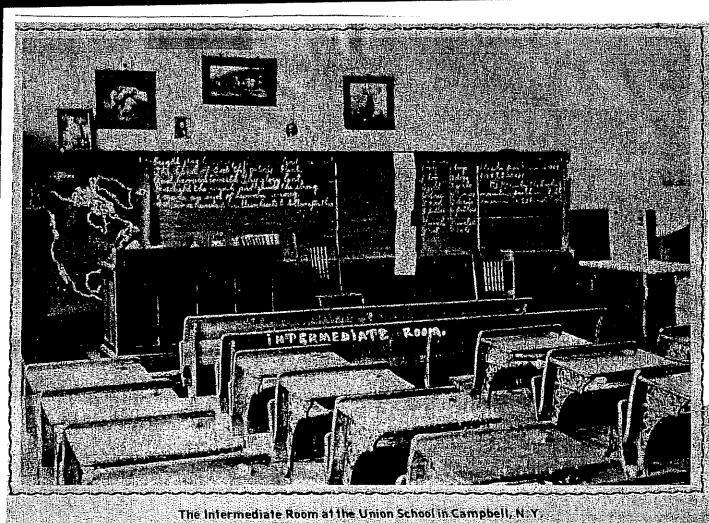


8. SCHOOL ROOMS – Union school had 3 rooms; on the left is the primary room which was for grades 1-3; the intermediate room is on the right which was for 4<sup>th</sup>, 5<sup>th</sup> and 6<sup>th</sup> grades; and upstairs ...

8.



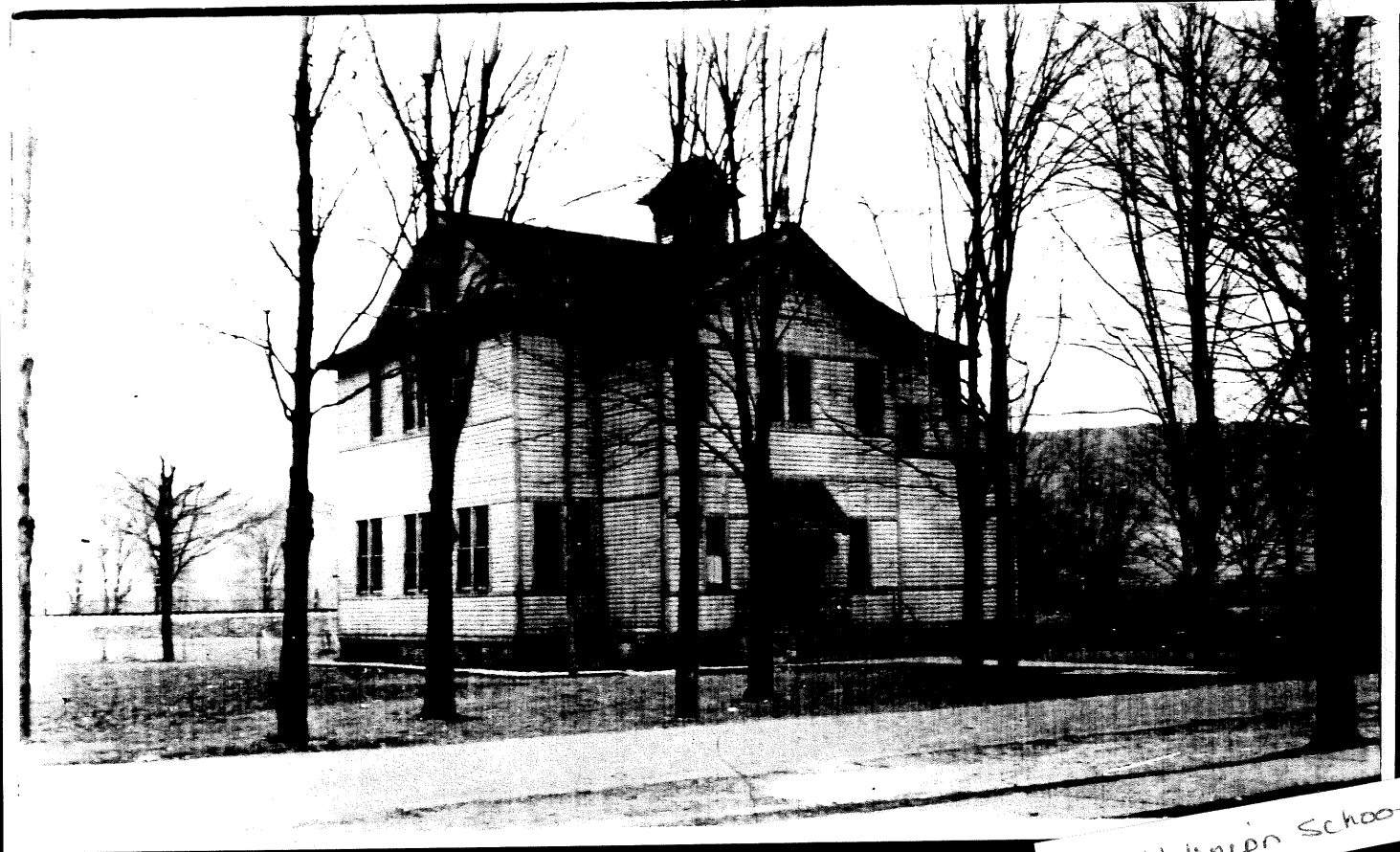
Primary



The Intermediate Room at the Union School in Campbell, N.Y.

Intermediate

9. UNION SCHOOL PIC A: yes, "upstairs" as it was always called, was 7<sup>th</sup> and 8<sup>th</sup> grades – It was a 2-story frame building.

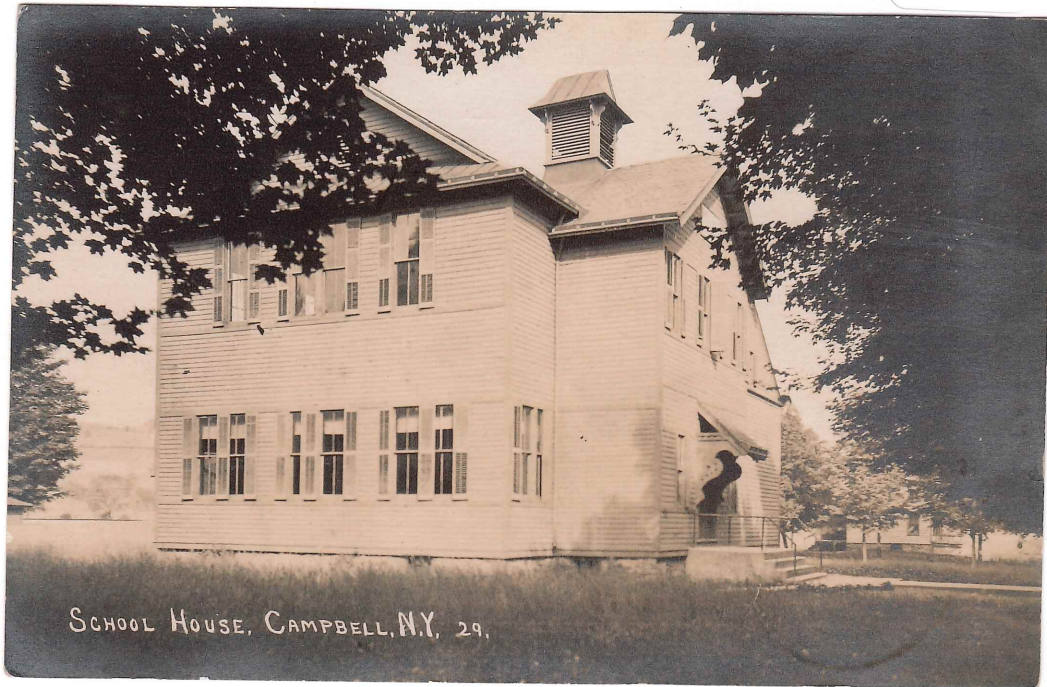


9.

The old Union School

10. UNION SCHOOL PIC B: Here's another view from a post card from about 1917. The Union School building had a cupola on the roof which contained a bell; and bathrooms were a "little house" outside. If you wanted to finish high school, in those days, you had to go to Corning which was about 10 miles. If you note the map is dated 1929, a time when they were looking to build a new school with a senior high.

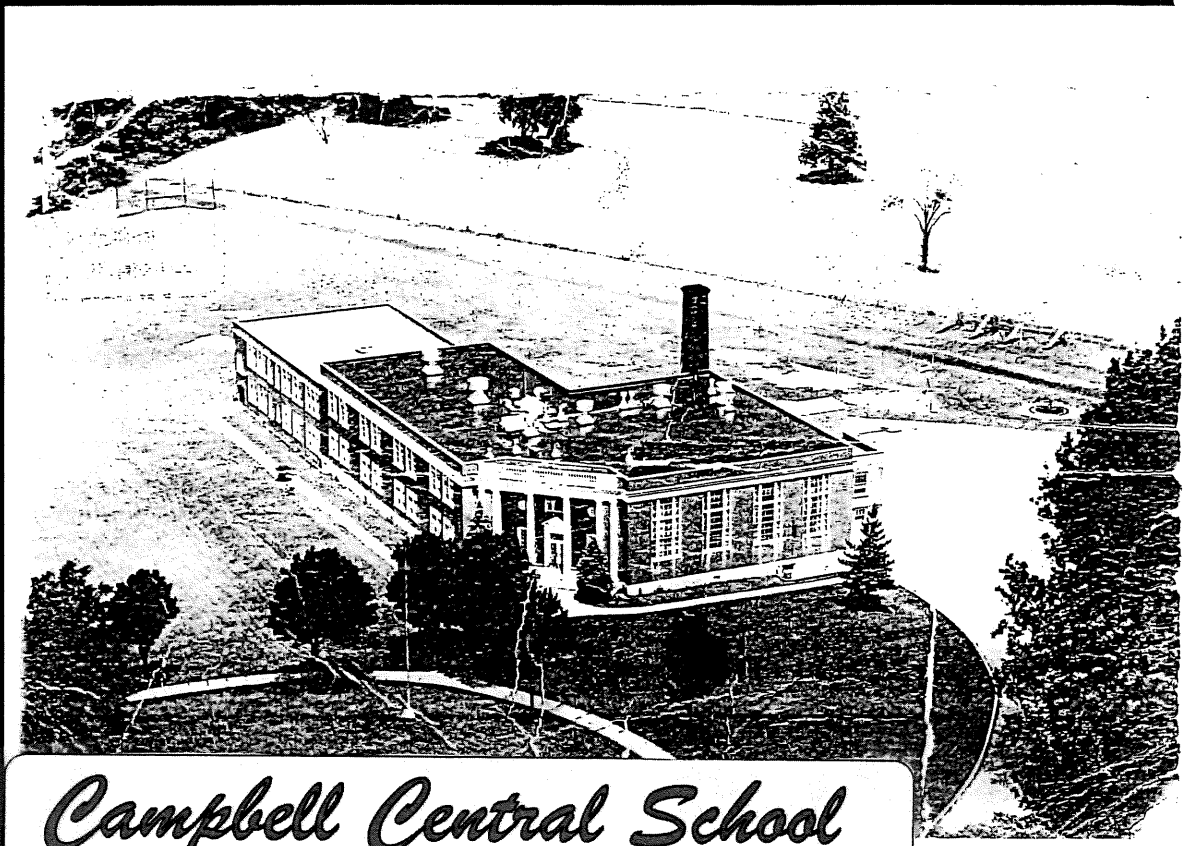
10.



From A Post Card - 1917

11.CCS – This picture shows the first part of the Campbell Central School building; groundbreaking was in 1931 and the school opened in the fall of 1932.

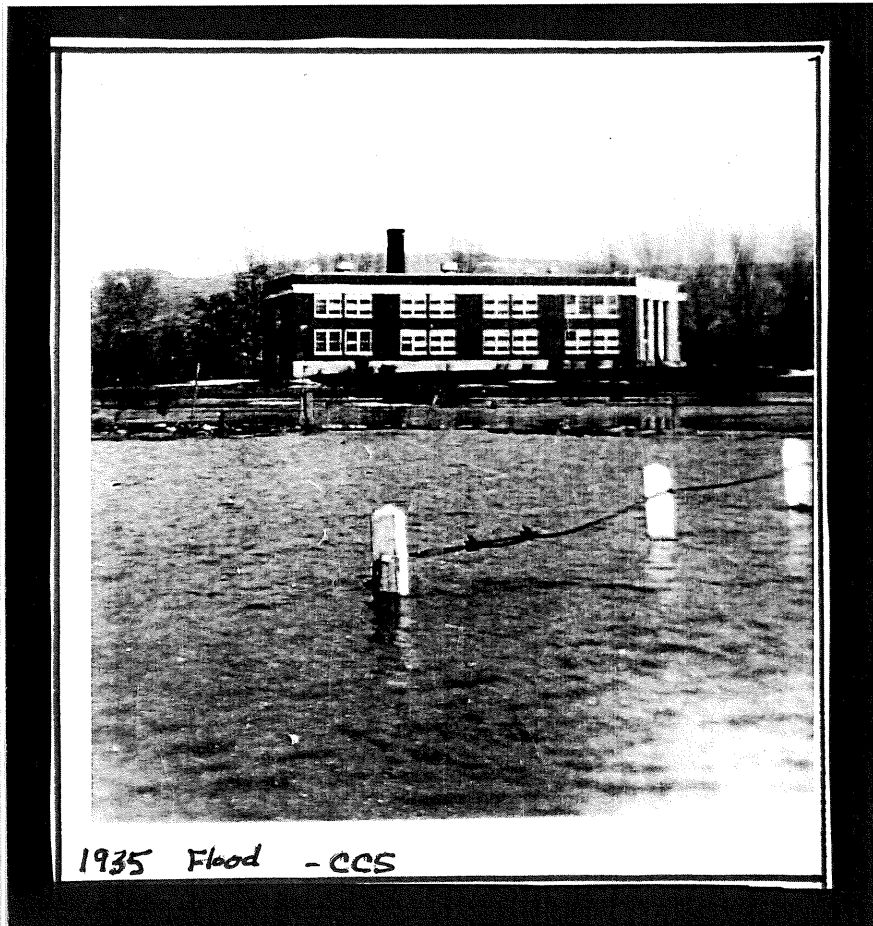
11



*Campbell Central School*

1931

12. CCS SCHOOL – Four years later was the 1935 flood – Here’s the school then and it doesn’t look like it bothered the school too much; in the years to follow they began expanding the facility.



13.C-S Sign – In 1992 the Campbell School consolidated with the Savona Central School and became Campbell-Savona Central School. This is the district's high school and the district elementary school is the original Savona school.

13.



14. TODAY –the C-S School today; Campbell-Savona has now been combined now for 30+ years, and both buildings have been regularly upgraded over the years. --- MOVING ON --

14.



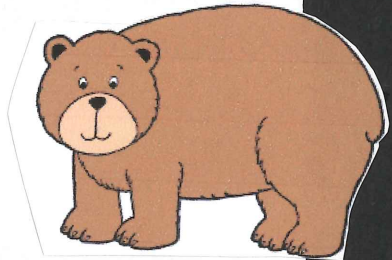


15.LOCATOR—We're going to go to the corner of Main Street & Center Street. --- The Bear is there to remind me to tell you to "bear" with me —there are a lot of places on Main Street that I don't have information on . So I am bringing to you what I have ...

15.

CORNER OF MAIN ST.  
& CENTER ST.

8488 MAIN



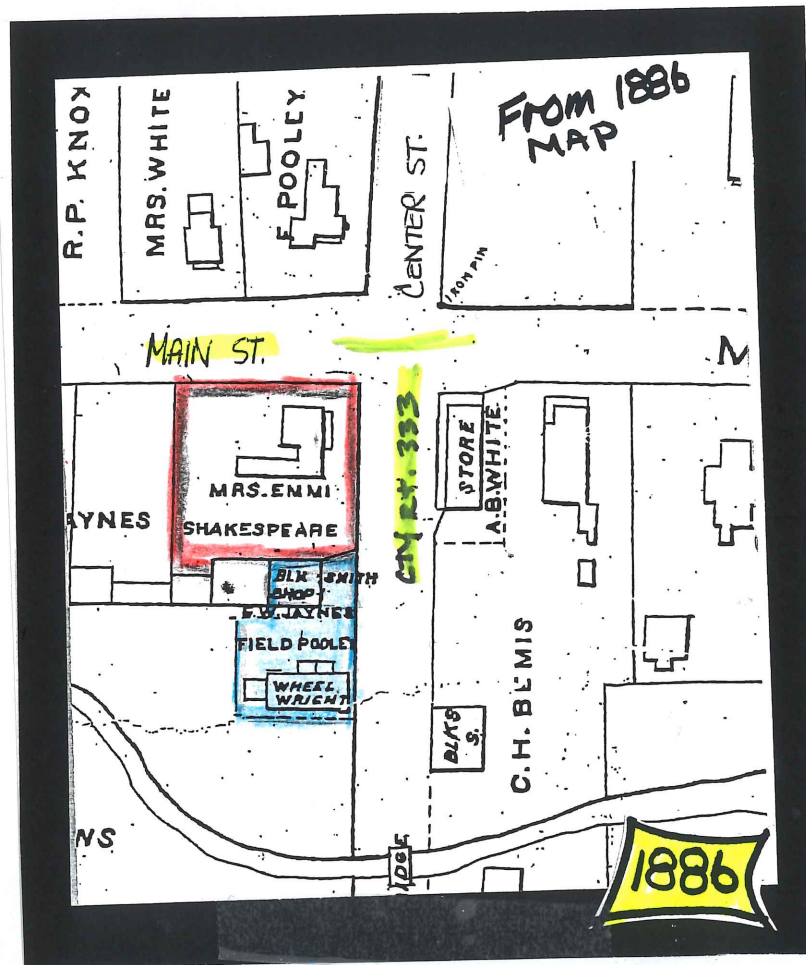
16.SUNOCO – This is a photo from 2023. It's Jamison's Sunoco Gas station and Mini-mart on the Corner; they have owned it since about 1970; so at each stop I'm going to give you a little history that I have dug up .....

16.



PICTURE TAKEN 2023 Jamison's Sunoco

17.HIST—1886 Map—Shows a house there—Emmi Shakespeare; after all, in 1886, no one needed to stop and get gas. BUT you notice outback was the blacksmith shop and the wheelwright shop.



17.

18. TEXACO – 1935 flood a neat old photo—the next is a bird's eye view ...



18.

19. TEXACO –you can see that same building on the corner—thinking this was about 1950. So....to get your bearing here, -- the red arrow is the corner store and the blue arrow is the old gas station.

19.



About 1950



Red - Corner Store  
Blue - Old Gas Station

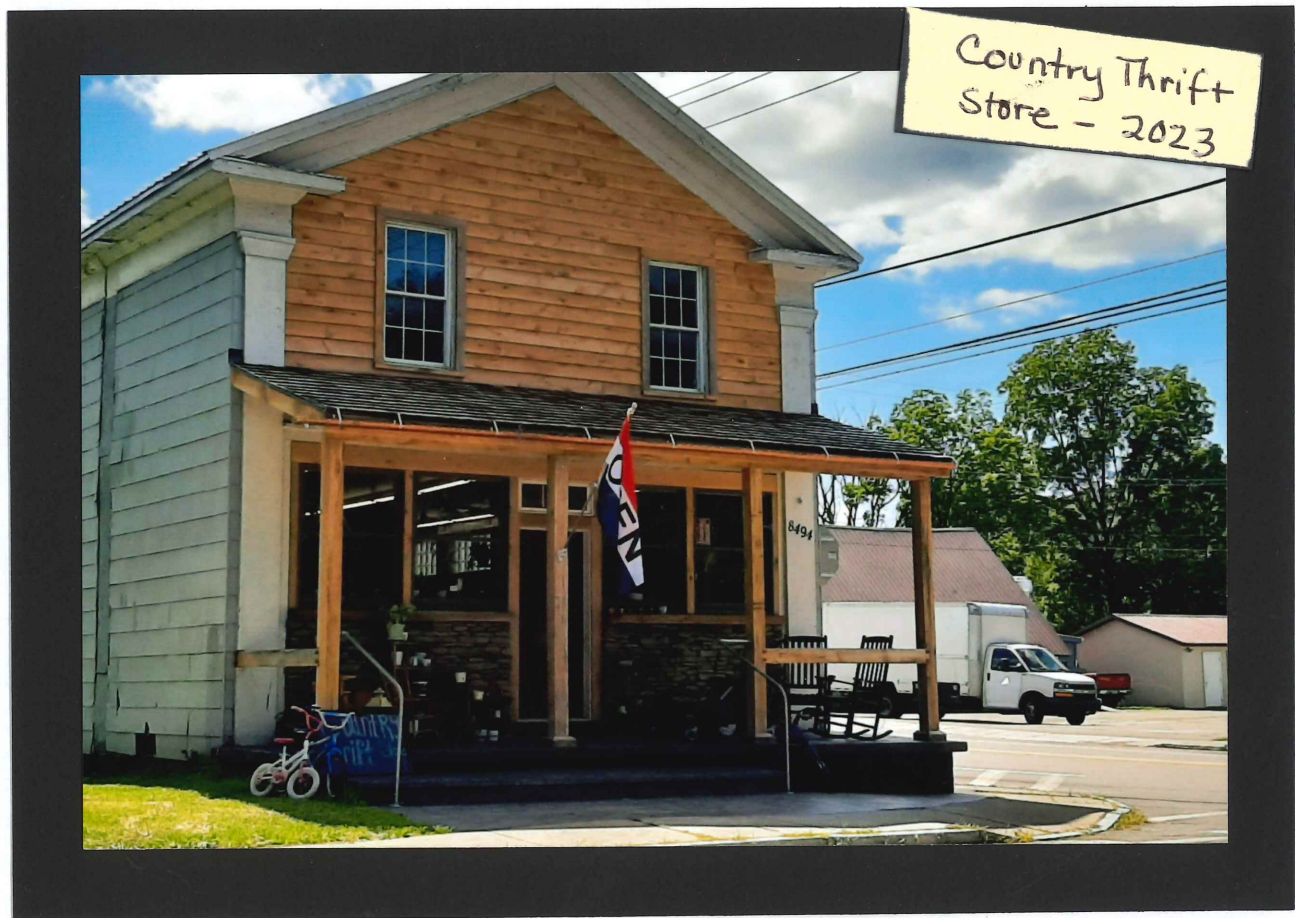
20. OLD GAS STATION – These photos are from about 1966 when the gas station was owned by William Fryer [the pictures are rather damaged] but, notice the S & H green stamps in the left picture – and on the right -- it appears to have Christmas decorations in the window.

20.



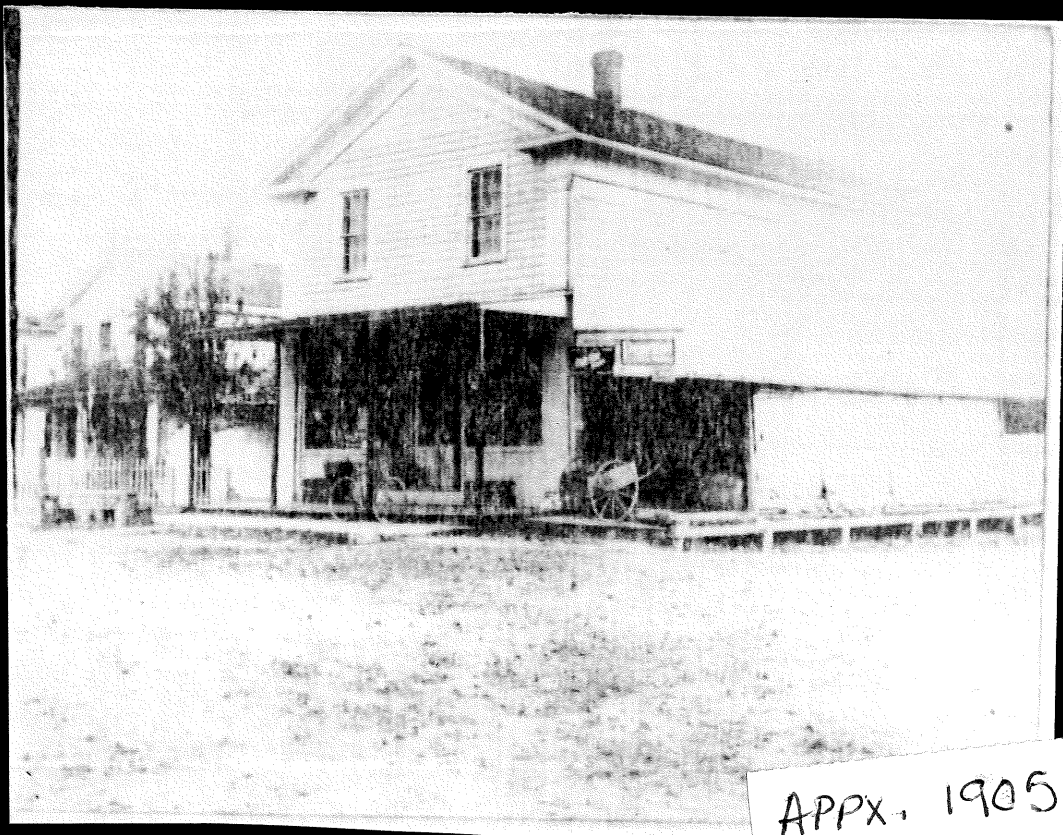
21. THRIFT STORE –new this year [2023] let's go across the street – the old corner store has been re-done and updated to kind of get the look of 100+ years ago.

21.



22.PIC 1905 -- This building was originally built as a lumber store [couldn't find any photos older than this one; it was built approx. in 1846; it is noted here that one of the main businesses in town at that time was lumbering.

**22.**





23.PIC 1909 – Here we are looking down Main Street; notice the horse and buggy there and the dog in the road; note the dirt road with all the ruts in it from the wagons passing by.

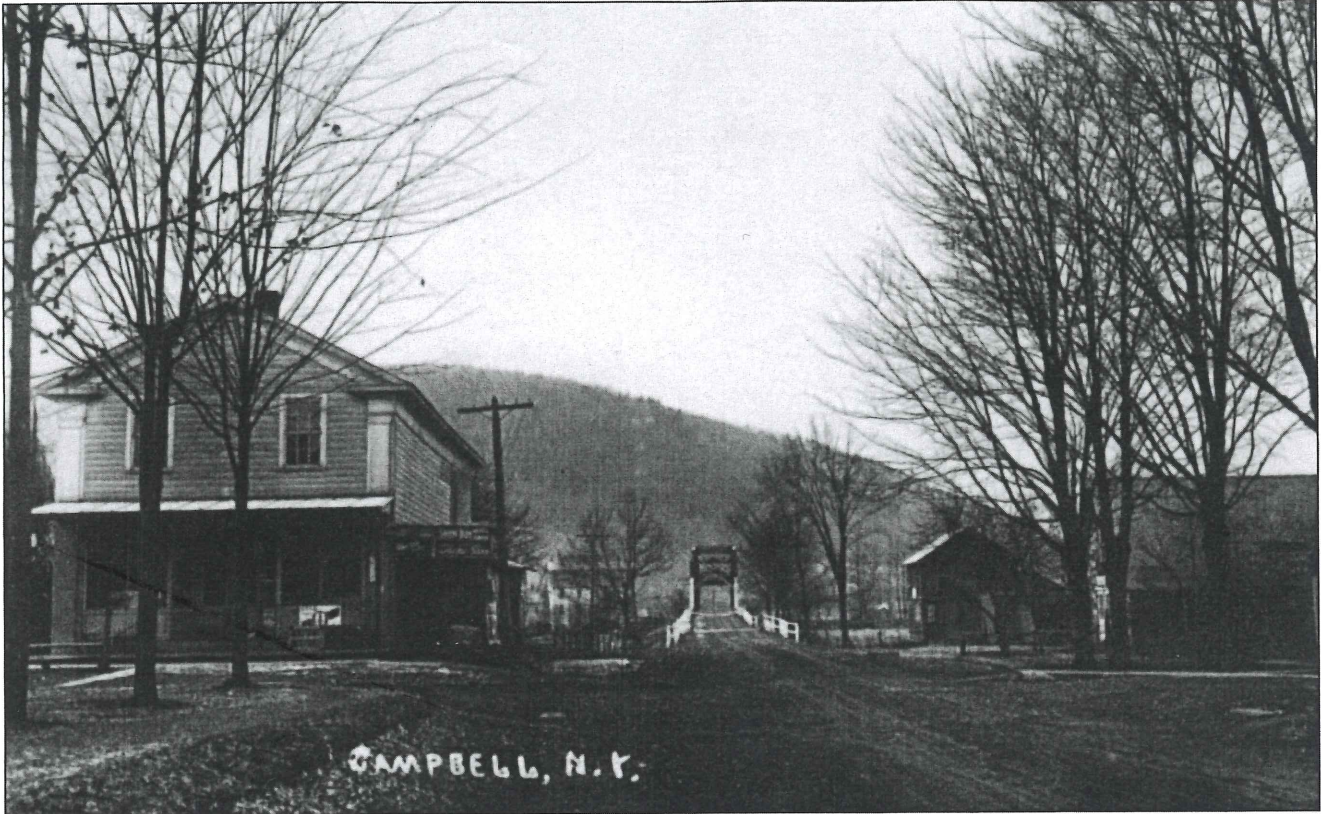
23.



Picture taken in 1909. Frank R. Aulls standing in front of the corner store with his hands in his pockets talking to somebody (perhaps the storekeeper). A wagon is going by and a dog (perhaps Mr. Aulls' dog) appears to be looking at him. The ruts from all the wagons that have passed by may be seen.

24. PIC Store—Now, we are looking down the road [westerly], toward the Bridge – in those early days, they called it the “old Main River Bridge”.

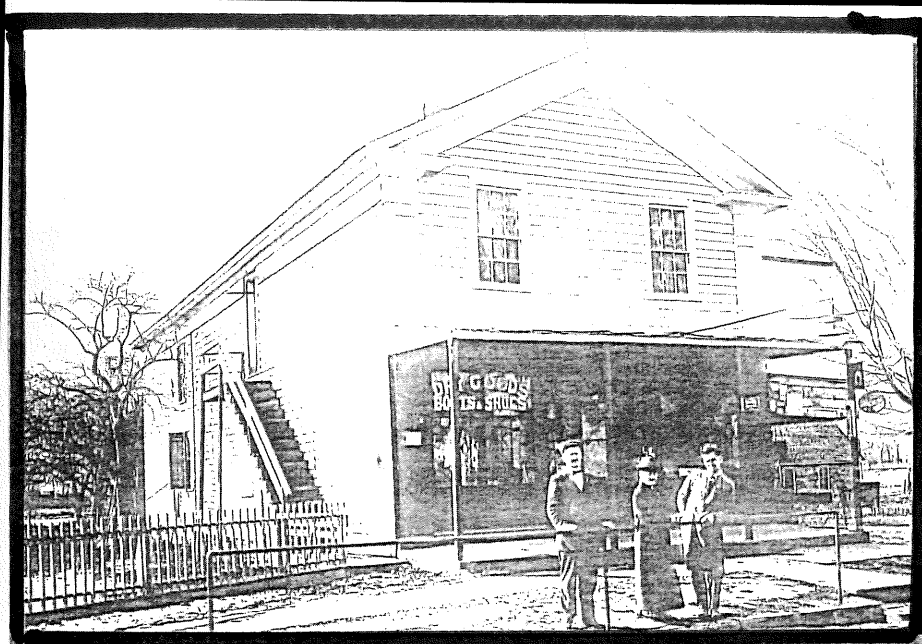
24.



From Steuben Co. Post Card History Series -  
John S. Babbitt and Ave. Babbitt

25. OLD STORE PIC—people by the hitching post—notice the sign in the window which says “Dry Goods, Boots and Shoes”.

25



Now Leonard Sutton's John Hamilton, Jane Hamilton and  
Sign at right says Wink & Broad Ben Platt, her brother

26.CAMPBELL GROC PIC—Sutton’s Grocery store for a number of years it was run by Leonard Sutton –this is a photo from about 2015. MORE INFO on Leonard is in my book of “NOTABLES”; which is my version of Who’s Who in Campbell history.

26.



27.NEXT DOOR PIC—This house was built by Bemis —part owner of the sawmill across the river.

27.



28. OLD BEMIS PIC – This is an older photo of the Bemis house. He had partnered up with James S. McKay; Bemis & McKay were the ones who had the mills—the flour and lumber mills—A NAME TO REMEMBER IS Col. James S. McKay. NOTE—this house was built in the same style as the corner store—originally built as a store also—current owner is Cheryl Wright.

28,



29. GOLDEN ERA OF POST CARDS—1900-1915 – I want to take a minute here to explain that the best photos we have are from post cards; POST CARDS were not just invented, they evolved over time—take a look at my display-- what we have the most of is the divided back, which is from the era of 1907 – 1915; it's interesting as they were the text message of the time—cheap, convenient and quick! It only cost a penny to mail them.

29.



**GOLDEN AGE  
OF POST CARDS**

30.PIC TODAY HOUSE ACROSS THE STREET – 8495 MAIN ST. The current [2023] owner is Rosno . It is a Queen Anne style home; one and a half story; it's the former Frank Aulls house with a little history to share ...

30.





31. AULLS HOUSE PIC 8 YEARS AGO-- Durland and Lynn Ball were former owners. Still today we call it the Aulls house ...

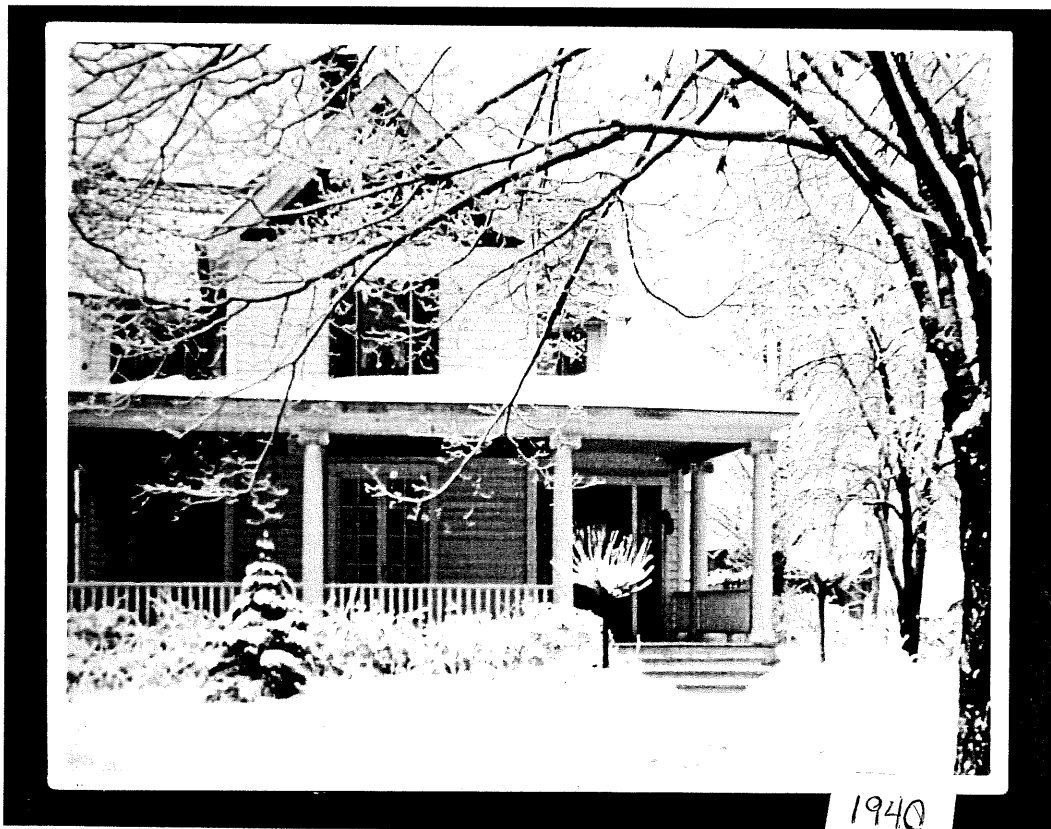
31.



taken About 2015

32.AULLS PIC – This is a photo from 1940 – {By then, he had died – 1938]  
Anyhow, Frank came to Town and bought the mills across the river in  
about 1900 and in 1921, he was the one who built the Aulls Electric  
plant at the American Legion site – it was 1921 when Main Street first  
got electric lights and Mr. Aulls had the very first house to have an  
electric stove!

32



33.FRANK & HORSE & BUGGY PIC -- Let's go back in time a little and this is a photo of Frank Aulls with his horse and buggy. [he lived from 1878-1938]; in the background you see the "Weale" house. FYI--There is more information on FRANK AULLS in my book of "NOTABLES".

**33.**



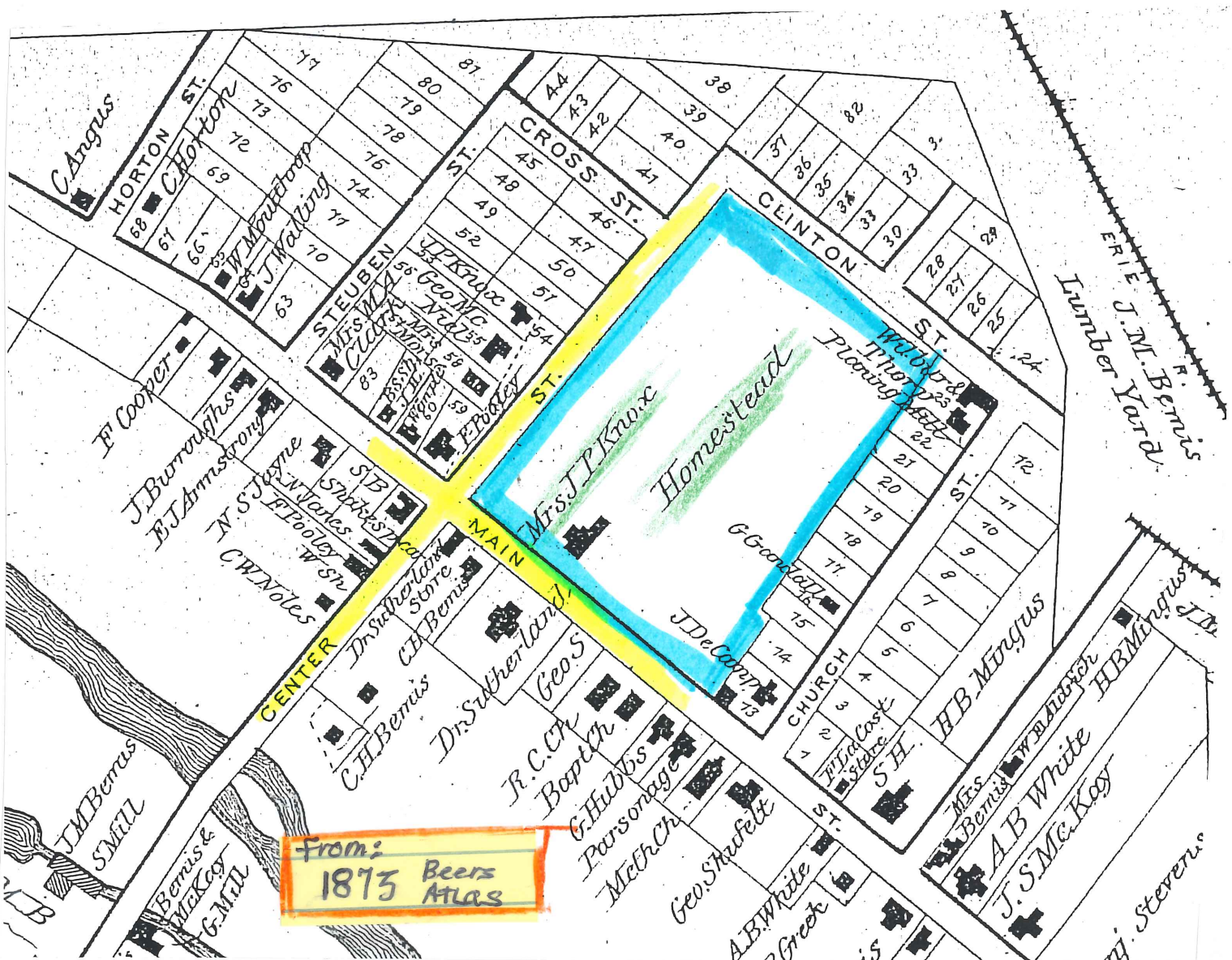
34.PIC WEALE HOUSE –This is the Weale house today. This house is a very old one—one of the oldest on the Street. A look at the 1873 map ...

34



35. MAP OF 1873—The house was then part of the Knox Homestead – this map shows that they owned almost the whole block and had begun dividing off lots along Church Street.

35



36.PIC WEALE -- 2015 -- This is 8499 MAIN—the former Weale house;  
Shirley Weale was Ira Platt's daughter [he was a business owner back  
in the day] —today's owner is James Bentley.

36,



37.FULLER HOUSE PIC – This is 8507 MAIN ST a photo from today.  
Current owner is Karen Ballos; it is a 3-story Queen Anne  
style—decorate railings are preserved; beautifully maintained. I  
estimate that it was built around 1895

37.



38.1970 PIC – Same house from about 1970; Former owners from around that time were the Ratchfords.

38.



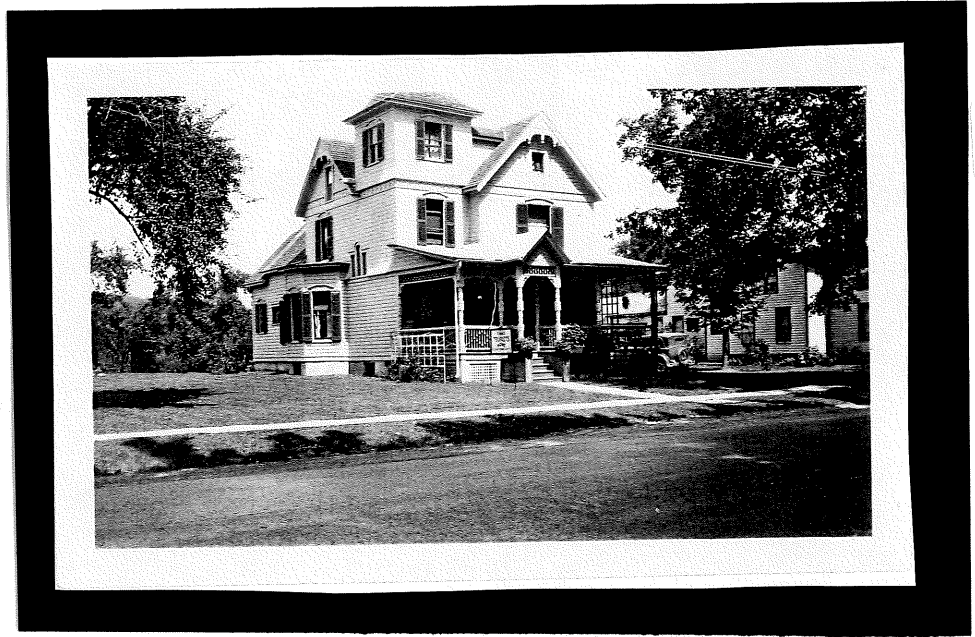
About 1970



39.PIC—Going back a little farther, this photo is from about 1930; it was a tourist lodging—note sign out front—says “TOURIST LODGING”. -  
Some other former owners: Alsen, Evans, Fuller.

Built  
About  
1895

Tourist Lodging —  
Sign Out Front



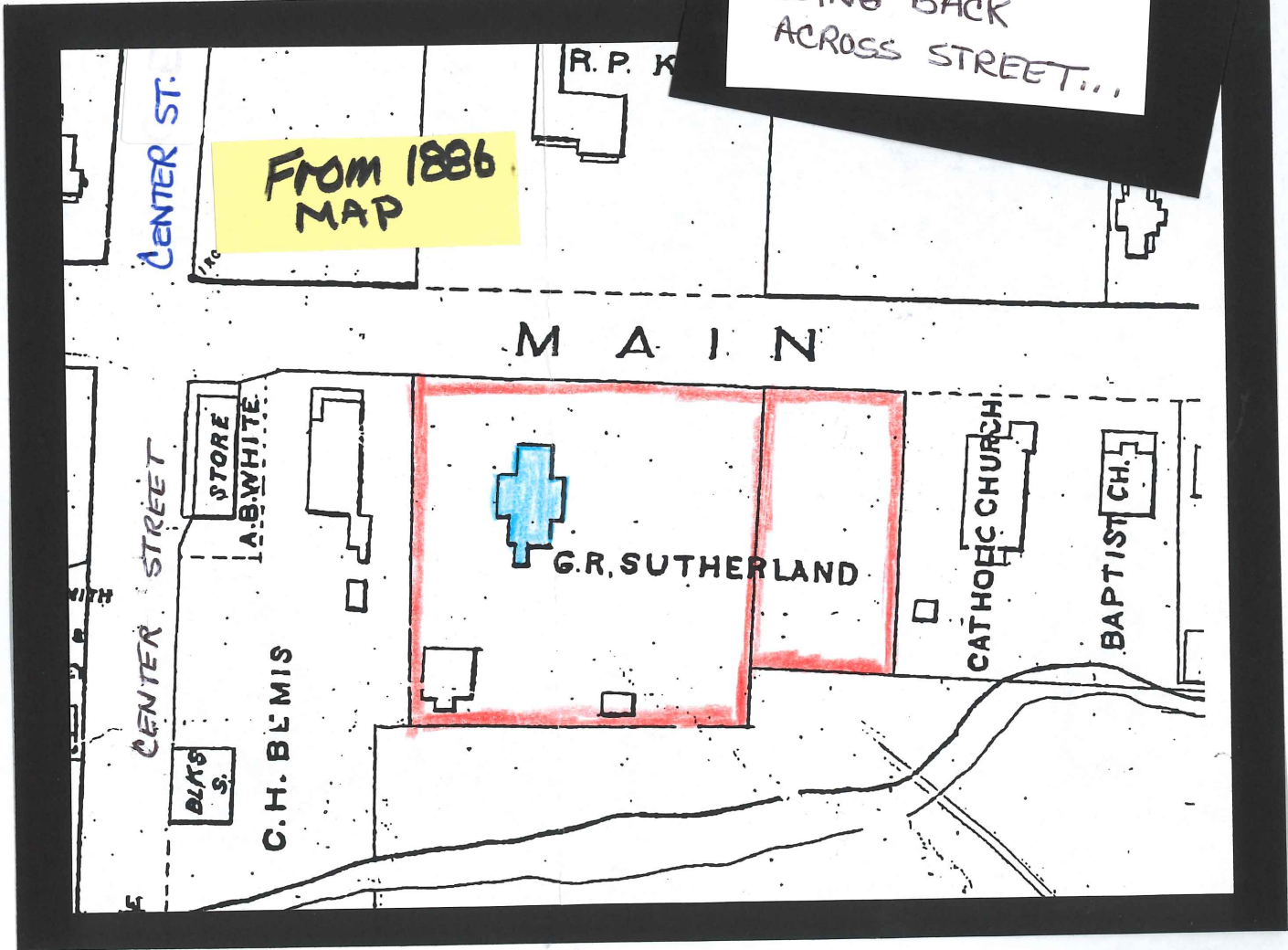
39.

This Pic Taken About 1930

40. MAP of 1886 – NOW, back to the 1886 Map of Campbell – a little about that map: There are very few photos of anything in Campbell prior to 1900, so..... the next best thing, is to get some clues from the maps. This is from the time period when Campbell was very prosperous. It was the main route between Corning and Bath and there were two railroads going through the Town for freight, passengers and the mail. ---- What I 'm looking at here is the big house next to the 2 old Bemis structures [ the 3<sup>rd</sup> building from the Corner.....] I estimate that it was built around 1895. The map says: G. R. Sutherland—you'll have to remember that name –he was the owner of the Bank – George Sutherland.

40.

GOING BACK  
ACROSS STREET...



41. 8500 MAIN ST PIC -- For a number of years the house was owned by William and Sara Rosplock – this pic is from about 2015. This is a two-story Italianate-style home; it has historic wood-slatted shutters. The first story has 3 porches. It is a style of architecture from the mid 1800's

41.



42. GOING back a few years – this was from a post card so probably it's from about 1915 – note the man standing out by the front – beautiful picket fence too! There is a story that a prominent doctor once lived there. From what I've learned, I'm thinking the doctor was George Sutherland's father, Leander Sutherland. Today's owner is Stephen Peck.

42.



43.8506 MAIN ST – the next house – a fairly recent photo – Greg and Martha Cacace’s house --- beautiful old house --2-story Queen Anne-style; it has a 2-story tower; historic features.

43.



44. OLDER PIC – In older days it was called the Stenson house. This house was built after the 1886 map; it was at one time the Stenson home; John Stenson was a former President of the Bath National Bank in about the 1960's. This is a beautiful historic home; most of its historic features are still there.

44

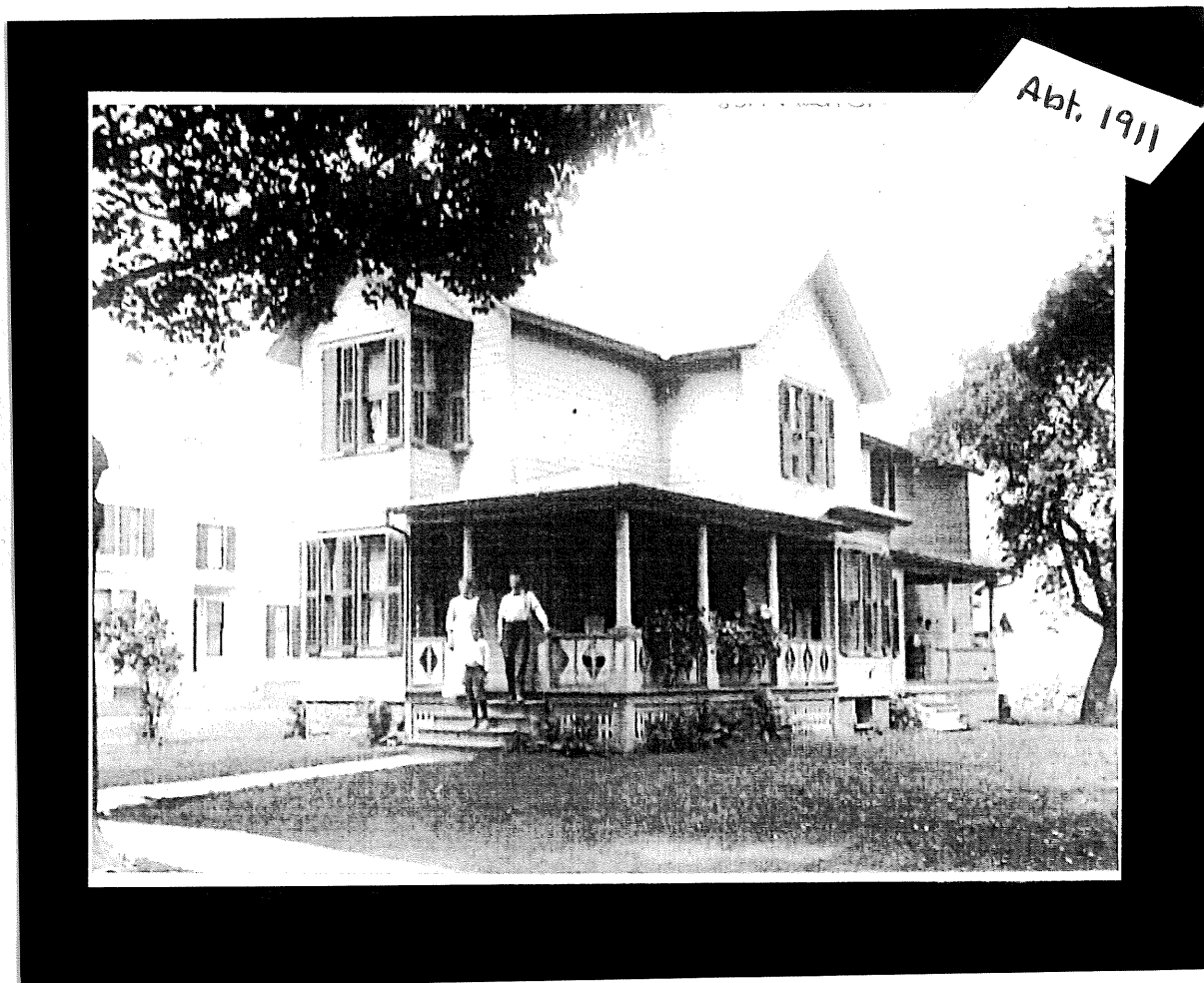


45.8511 MAIN ST PIC—over on the other side of the street, let's take a look at 8511 Main Street. This photo is from about 2015; present owner is now: Judy Watkins.



46. PLATT HOUSE -- This photo is from about 1911; pictured here is Ira Platt, Stella Platt and their son, Donald Platt [the brother of Shirley Weale] Donald G. Platt is a name to remember!

46.





47. CHURCH PIC --Going down the street [back on the west side] we're at the St. Joseph Catholic Church which was built in 1870—this photo is from 2015.

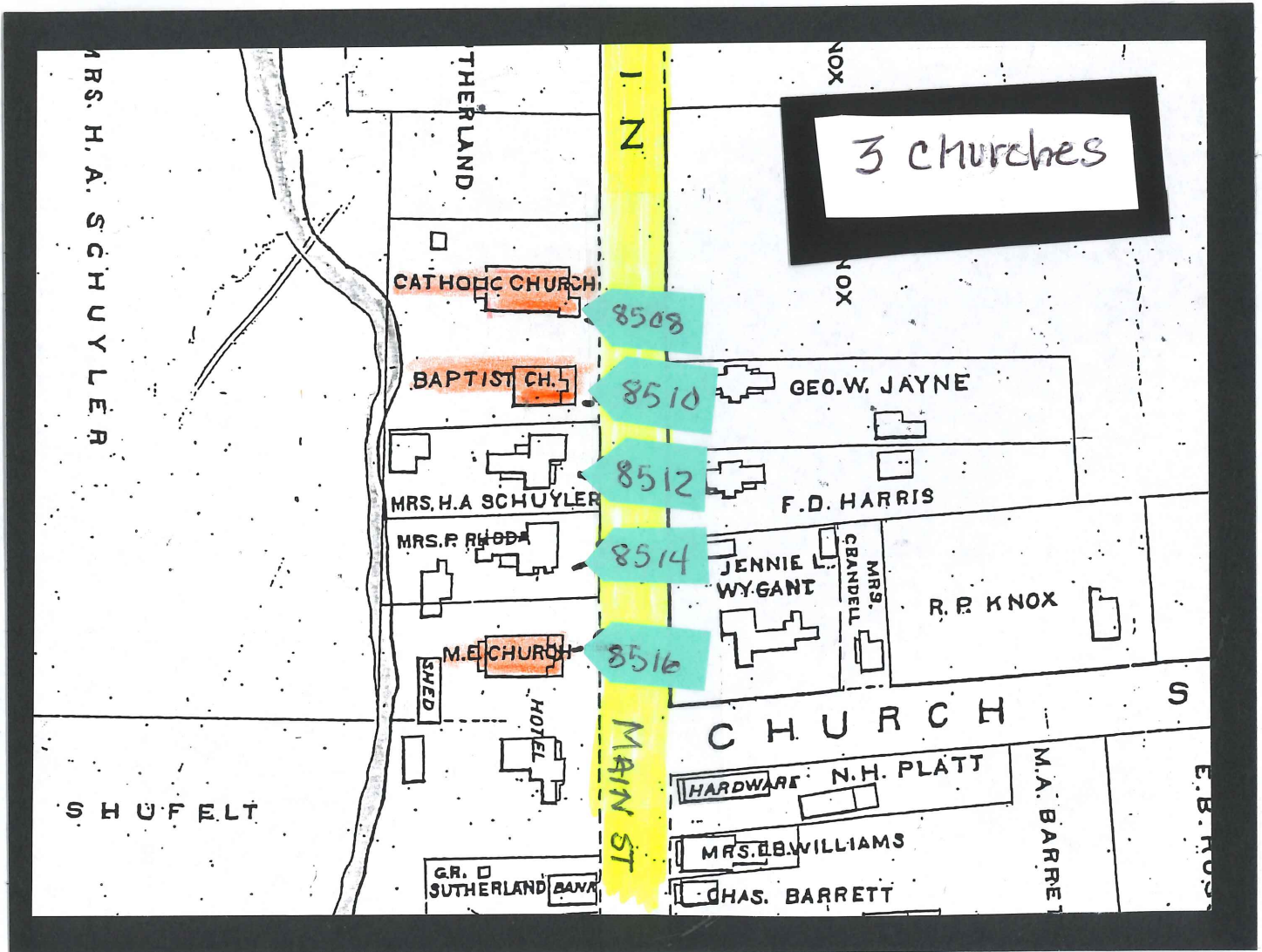
47.



**CAMPBELL'S ST. JOSEPH  
CATHOLIC CHURCH**

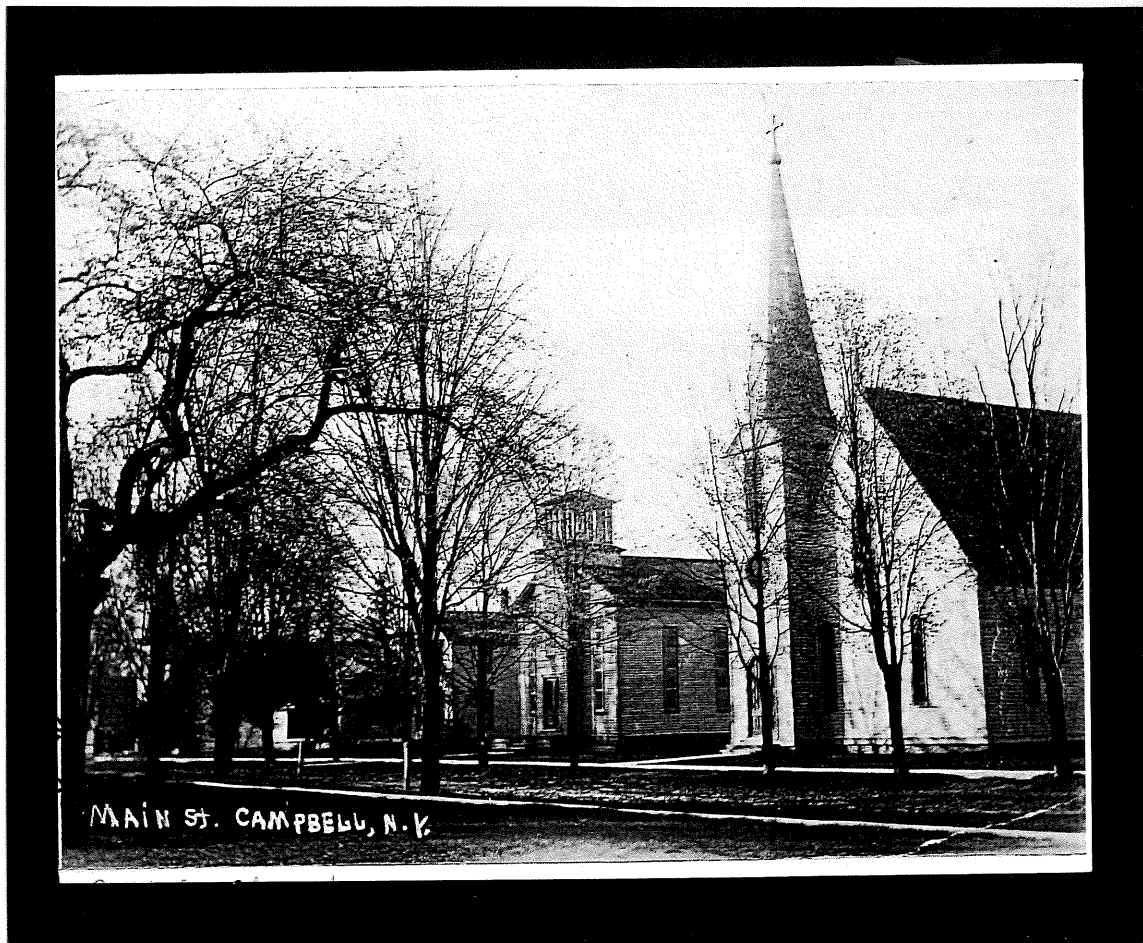
48. MAP—Back to the good ole map of 1886—I'm going to show you where I'm going with this story.... It's the story of these 5 properties and 3 churches; the churches are highlighted in orange and the numbers are to help me figure out which was which!

48



49. CATHOLIC & BAPTIST CHURCH --This next picture is from an old post card – guessing early 1900's -- maybe 1910. On the right hand side is the Catholic Church and the next one is the former Baptist church. It was first organized as a branch of the Savona Church in 1870. It is listed on the 1873 beers atlas map as the baptist church. History notes from Pioneer History & Atlas --say that the new house of worship was erected in 1873.

49.



50. BAPTIST CHURCH AS A HOUSE--Fast forward to about 1990 – here it is—a house--; a further note on this is that on a 1930 map it is listed as “Packard”, which I believe-- it was at that time a funeral home. The undertaker’s name was I. Grant Packard in the 1920’s; he died in 1924 and his son, Eldon B. Packard continued the funeral business. He was Eldon B. Packard or E. B. Packard, the father of Sidney Packard. If you don’t recognize the name E. B. Packard, he was very instrumental in the Campbell Fire Department in its early years. It was originally named the “E. B. Packard Hose Co.”; it was incorporated in 1954 as the “E. B. Packard Hose Co.”

50.



1990

Former Baptist church

51. MOVING ON --- The structure was torn down in the 90's; thereabouts and the site is now part of the Catholic Church parking lot.

51.

Now-Parking lot



52. HOUSE PIC-- 8512 MAIN ST --The next house which was torn down—again in the 90's; at one time the Morgans lived there.

52.



PHOTOS  
1990

GONE

53.HOUSE PIC-- 8514 MAIN ST – it was the first parsonage of the Methodist Church –formerly the Dave & Dorothy Austin House torn down in the 90's thereabouts.

53.



54.CHURCH PIC – We now see the Methodist church and with these 2 houses now gone, it is now parking lot for the Methodist Church.

54.

## CAMPBELL METHODIST CHURCH



These 2 houses Now Parking Lot



55.CHURCH PIC – This is the Methodist Church today. It was organized as early as 1827 or 1828 – but the building wasn't put there until about 1869; when it was dedicated. The old "Steuben Courier" printed this... "The new Methodist Church of Campbelltown is to be dedicated with appropriate service on Thursday January 21, 1869."

55.



56. OLD PIC OF CHURCH -- Methodist Church -- story about how the building came to be -- legend had it that it was originally part of the Presbyterian church which was built in Hope Cemetery and moved down the street in about 1868 to the Methodist lot which had been donated by John Knox and James Bemis, two local businessmen, and they refurbished it at a cost of \$2,500.00. Just so you know . . . \$2500 in 1868 was like spending over \$55,000.00 today. Then it was enlarged over the years with an annex added in 1952.

56.



57.NEXT SEGMENT WILL BE --#2 --BUSINESS BLOCK WEST

57.

UP NEXT:  
CAMPBELL'S  
Business Block-West